



SOUTHEASTERN[™] CONFERENCE

BRAND STYLE GUIDE
2017-18

TABLE OF CONTENTS

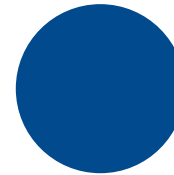
LOGOS AND COLOR PALETTE	02
SECU LOGOS	04
SEC NETWORK LOGOS	05
PRIMARY SCHOOL ATHLETIC LOGO	06
CHAMPIONSHIP MARKS	07
SCHOOL SPECIFIC CONFERENCE LOGOS	08
UNIFORM & APPAREL PATCH PLACEMENT	09
CROSS COUNTRY/TRACK & FIELD	10
SOCCER	11
VOLLEYBALL	12
FOOTBALL	13
EQUESTRIAN	14
SWIMMING & DIVING	15
BASKETBALL	16
GYMNASTICS	17
TENNIS	18
GOLF	19
BASEBALL/SOFTBALL	20
PLAYING SURFACE LOGO PLACEMENT OVERVIEW	21
SOCCER	22
VOLLEYBALL	23
FOOTBALL	24
BASKETBALL	25
BASEBALL/SOFTBALL	26
ALL OTHER SPORTS	27

LOGOS & COLOR PALETTE

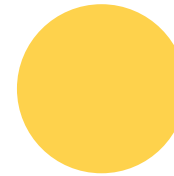
The Conference encourages institutions to utilize the SEC logo in school colors (see page 8) for these applications. Use of the SEC identity is restricted to its member institutions and organizations authorized by the SEC. Any other usage is strictly prohibited without the express written consent of the Southeastern Conference.

GOTHAM BLACK

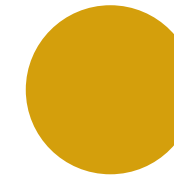
PRIMARY TYPEFACE



PMS 288
C 100 M 67 Y 0 K 23
MADEIRA THREAD 1167



PMS 122
C 0 M 17 Y 80 K 0
MADEIRA THREAD 1171



PMS 131
(FOR USE IN BEVELED LOGOS ONLY)
C 0 M 32 Y 100 K 9

COLOR PALETTE

LOGOS & COLOR PALETTE



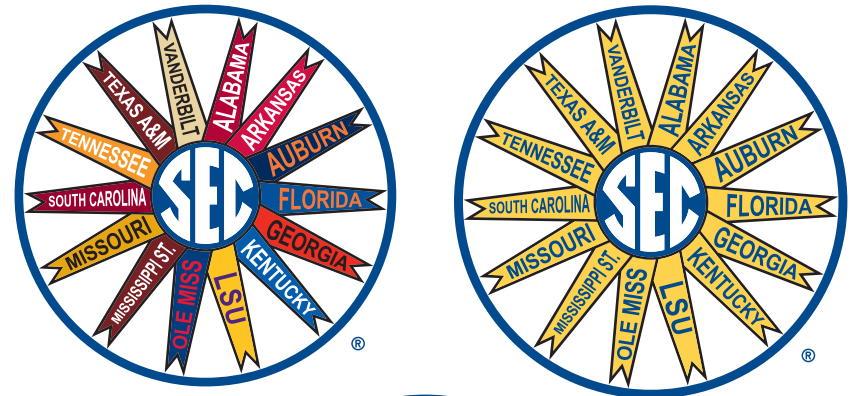
PRIMARY LOGOS



WORD LOGOS

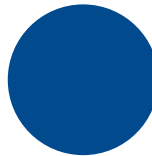


BEVELED LOGOS

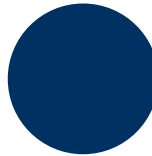


PINWHEEL LOGOS

SECU LOGOS



PMS 288
C 100 M 67 Y 0 K 23

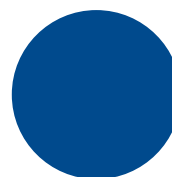


PMS 289
C 100 M 60 Y 0 K 56

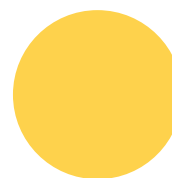


PMS 872
C 43.28 M 47.48 Y 73.23 K 18.34

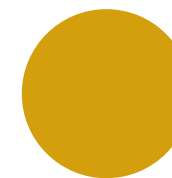
SEC NETWORK LOGOS



PMS 288
C 100 M 67 Y 0 K 23
MADEIRA THREAD 1167



PMS 122
C 0 M 17 Y 80 K 0
MADEIRA THREAD 1171



PMS 131
(FOR USE IN BEVELED LOGOS ONLY)
C 0 M 32 Y 100 K 9

COLOR PALETTE

SCHOOL LOGOS



ALABAMA

CRIMSON: PMS 201 | C:0 M:100
Y:63 K:29 | R:179 G:8 B:56
LIGHT SILVER: PMS 428 | C:2 M:0 Y:0
K:18 | R:207 G:212 B:216
BLACK



ARKANSAS

RED: PMS 201 | C:7 M:100
Y:68 K:32 | R:157 G:34 B:53
BLACK



AUBURN

BLUE: PMS 289 | C:100 M:64
Y:0 K:60 | R:0 G:43 B:92
ORANGE: PMS 172 | C:0 M:75
Y:100 K:0 | R:242 G:101 B:34



FLORIDA

BLUE: PMS 287 | C:100 M:60
Y:0 K:20 | R:0 G:48 B:135
ORANGE: PMS 172 | C:0 M:80
Y:100 K:0 | R:250 G:70 B:22
GREEN: PMS 349 | C:90 M:12
Y:95 K:40 | R:4 G:106 B:56



GEORGIA

RED: PMS 200 | C:16 M:100
Y:87 K:6 | R:195 G:0 B:47
SILVER: PMS 429 | C:38 M:28
Y:27 K:0 | R:93 G:103 B:112
BLACK



KENTUCKY

BLUE: PMS 286 | C:100
M:75 Y:0 K:0 | R:0 G:51 B:60
GRAY: PMS COOL GRAY 3 | C:8
M:5 Y:7 K:16 | R:200 G:201 B:199



LSU

PURPLE: PMS 268 | C:82 M:98
Y:0 K:12 | R:70 G:29 B:124
GOLD: PMS 123 | C:0 M:19 Y:89
K:0 | R:253 G:208 B:35
BLACK



OLE MISS

RED: PMS 186 | C:0 M:100
Y:81 K:4 | R:227 G:24 B:55
BLUE: PMS 281 | C:98.82 M:85.49
Y:42.46 K:42.48 | R:18 G:40
B:73



MISSISSIPPI STATE

MAROON: PMS 505 | C:50 M:100
Y:100 K:25 | R:102 G:0 B:0
GRAY: PMS 428 | C:2 M:0 Y:0
K:18 | R:207 G:212 B:216



MISSOURI

GOLD: PMS 1245 | C:6 M:35
Y:99 K:18 | R:198 G:146 B:20
BLACK



SOUTH CAROLINA

GARNET: PMS 202 | C:0 M:100
Y:61.18 K:43.14 | R:152 G:0 B:46
BLACK



TENNESSEE

ORANGE: PMS 151 | C:0 M:60
Y:100 K:0 | R:255 G:130 B:0



TEXAS A&M

MAROON: PMS AGGIE MAROON
C:15 M:100 Y:39 K:69
R:80 G:0 B:0



VANDERBILT

GOLD: PMS 7502 | C:0 M:17
Y:47 K:19 | R:232 G:211 B:162
BLACK

CHAMPIONSHIP MARKS



BASEBALL:
COMING SOON

SCHOOL SPECIFIC CONFERENCE LOGOS



ALABAMA
PMS 201 CRIMSON



ARKANSAS
PMS 201 RED



AUBURN
PMS 172 ORANGE
PMS 289 BLUE



FLORIDA
PMS 287 BLUE
PMS 172 ORANGE



GEORGIA
PMS 200 RED
BLACK



KENTUCKY
PMS 286 BLUE



LSU
PMS 268 PURPLE
PMS 123 GOLD



OLE MISS
PMS 186 RED
PMS 281 BLUE



MISSISSIPPI STATE
PMS 505 MAROON
PMS 428 GRAY



MISSOURI
PMS 1245 GOLD
BLACK



SOUTH CAROLINA
PMS 202 GARNET
BLACK



TENNESSEE
PMS 151 ORANGE



TEXAS A&M
PMS AGGIE MAROON



VANDERBILT
PMS 7502 GOLD
BLACK

UNIFORM & APPAREL PATCH PLACEMENT

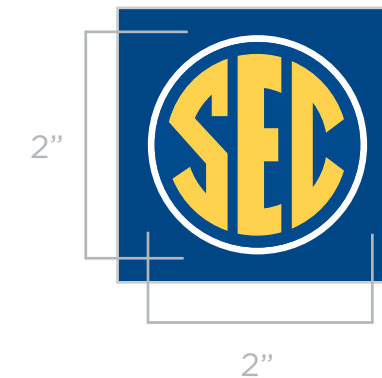
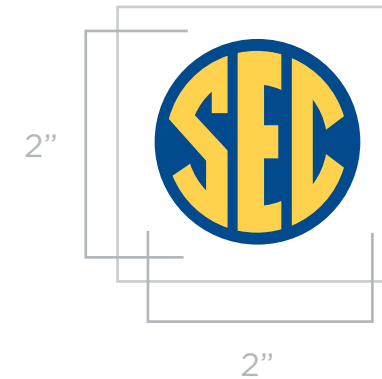
This section of the style guide is intended to assist member institutions with placement of the SEC logo patch. Each institution should utilize the SEC uniform patch in its approved school colors. Detailed information about acceptable SEC school color marks, including PMS colors, may be found on page 8 of this style guide. In some sports, uniform specifications (e.g. material) may dictate that a screen print version of the SEC mark be used in place of the uniform patch. Acceptable instances involving the screen print version of the SEC logo are outlined by sport in the style guide. Please note that while the Conference will supply the uniform patches, it will be the responsibility of each institution to have the mark screen-printed in the designated size and colors. For the sport of football, please note the acceptable patch sizes. (pg. 13)

SEC GRADUATE PATCH

In each SEC sport, student-athletes who have earned their college degree but are still engaged in competition will wear a specially-designed patch indicating their graduate status.

- The patch will be designed by the SEC Office and distributed by a patch provider designated by the SEC. The design will be similar for all schools, but will be school-specific in color.
- The patch will be worn by any SEC student-athlete upon their first competition following the graduation ceremony at which their degree is awarded, and throughout the remainder of their college eligibility.
- The graduate patch program will be inclusive of graduate transfers to SEC institutions.
- A design of the graduate patch was approved by the SEC Athletics Directors at their meeting of August 17, 2016. Schools may implement the program as soon as possible, but not later than December 15, 2016.

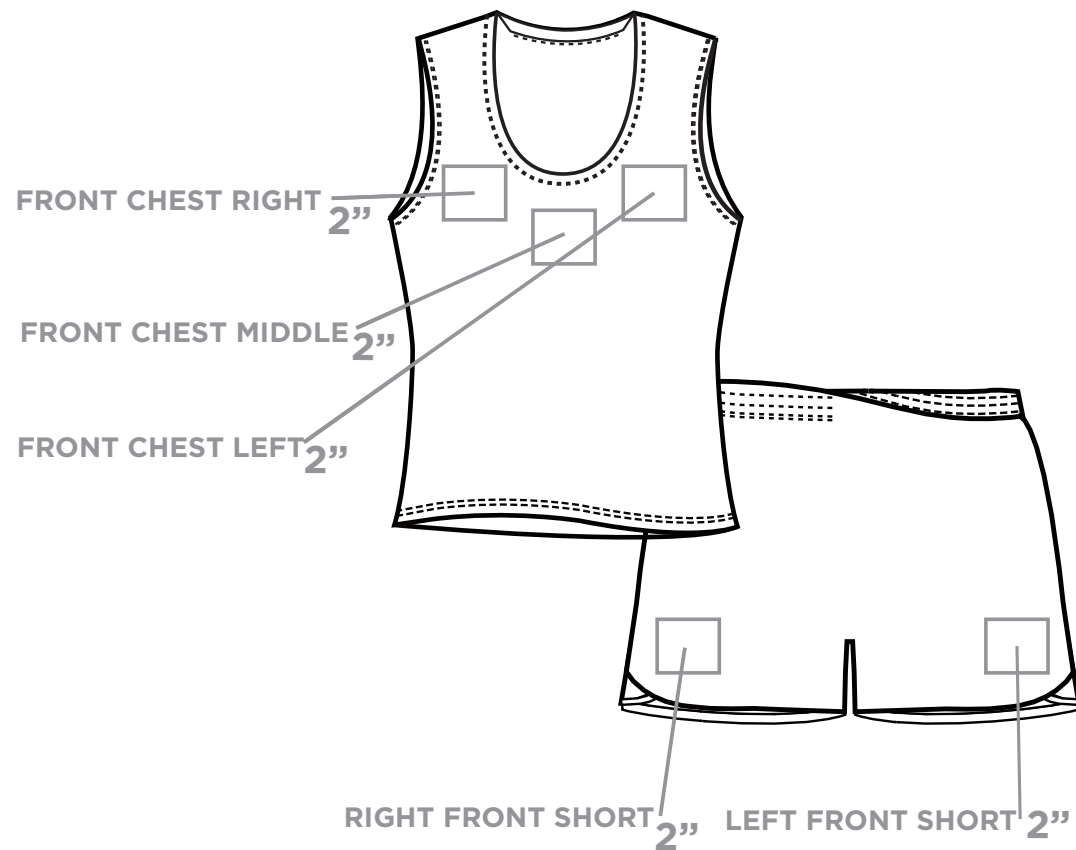
UNIFORM PATCH SPECS



UNIFORM & APPAREL PATCH PLACEMENT - CROSS COUNTRY/TRACK & FIELD

Due to varying uniform types for Cross Country/Track & Field, either an SEC uniform patch or SEC full color screen print mark is acceptable and should be done in one of an institution's approved color schemes. Placement options are as follows:

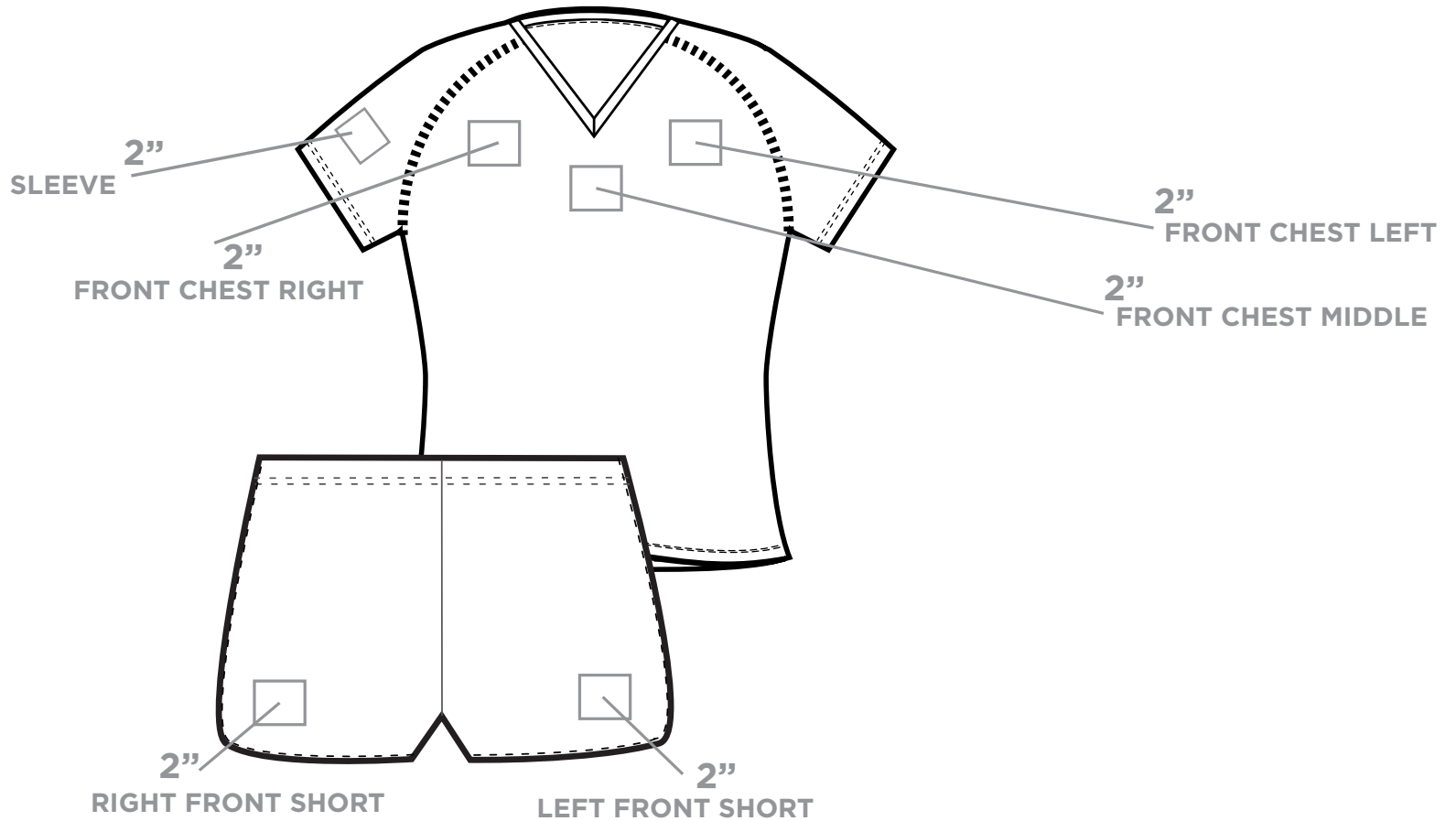
- Front Chest Left
- Front Chest Right
- Front Chest Middle
- Left Front Short
- Right Front Short



UNIFORM & APPAREL PATCH PLACEMENT - SOCCER

Due to varying uniform types for Soccer, either an SEC uniform patch or SEC full color screen print mark is acceptable and should be done in one of an institution's approved color schemes. Placement options are as follows:

- Front Chest Left
- Front Chest Right
- Front Chest Middle
- Left Sleeve
- Right Sleeve
- Left Front Short
- Right Front Short

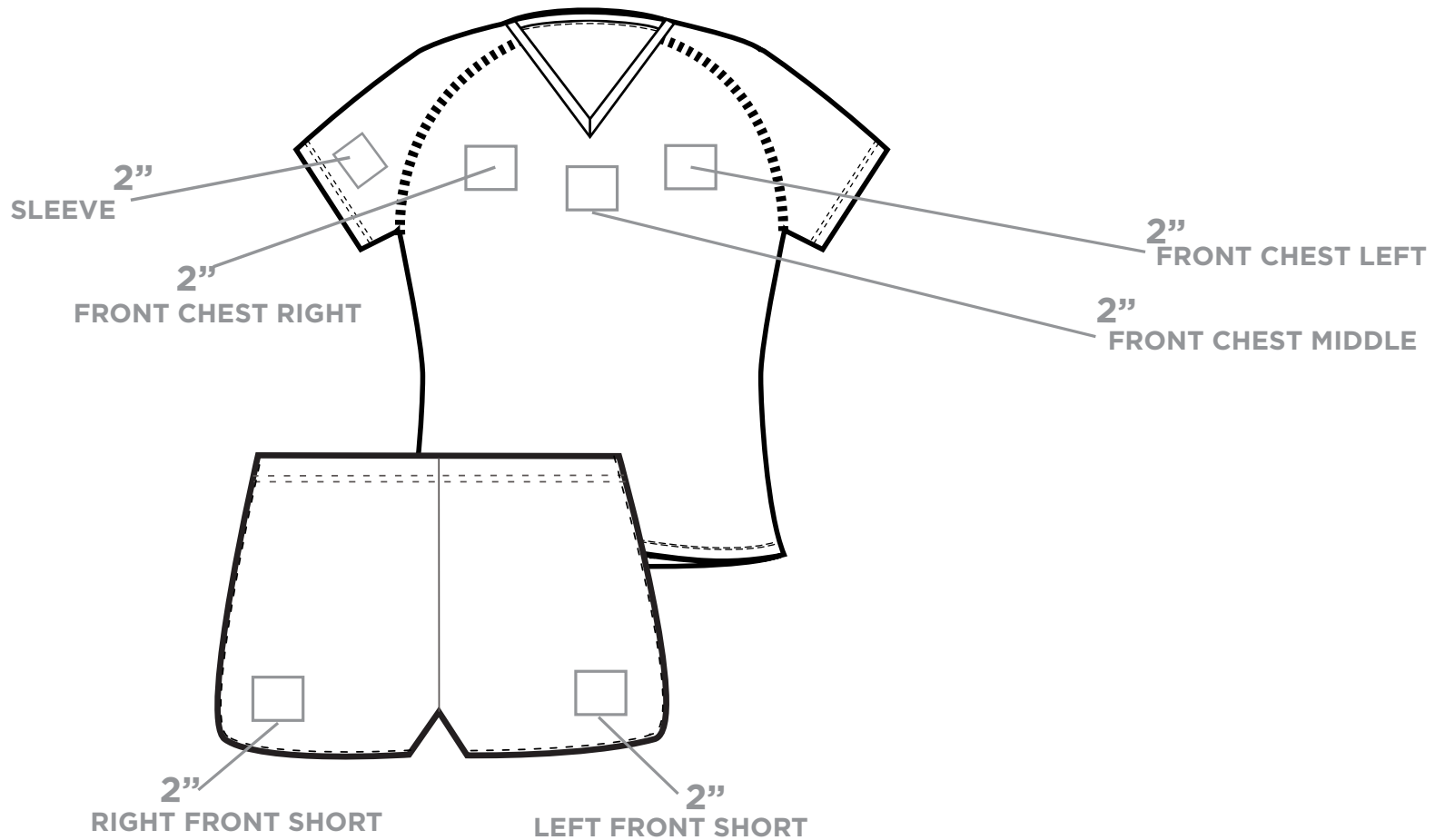


T

UNIFORM & APPAREL PATCH PLACEMENT - VOLLEYBALL

Due to varying uniform types for Volleyball, either an SEC uniform patch or SEC full color screen print mark is acceptable and should be done in one of an institution's approved color schemes. Placement options are as follows:

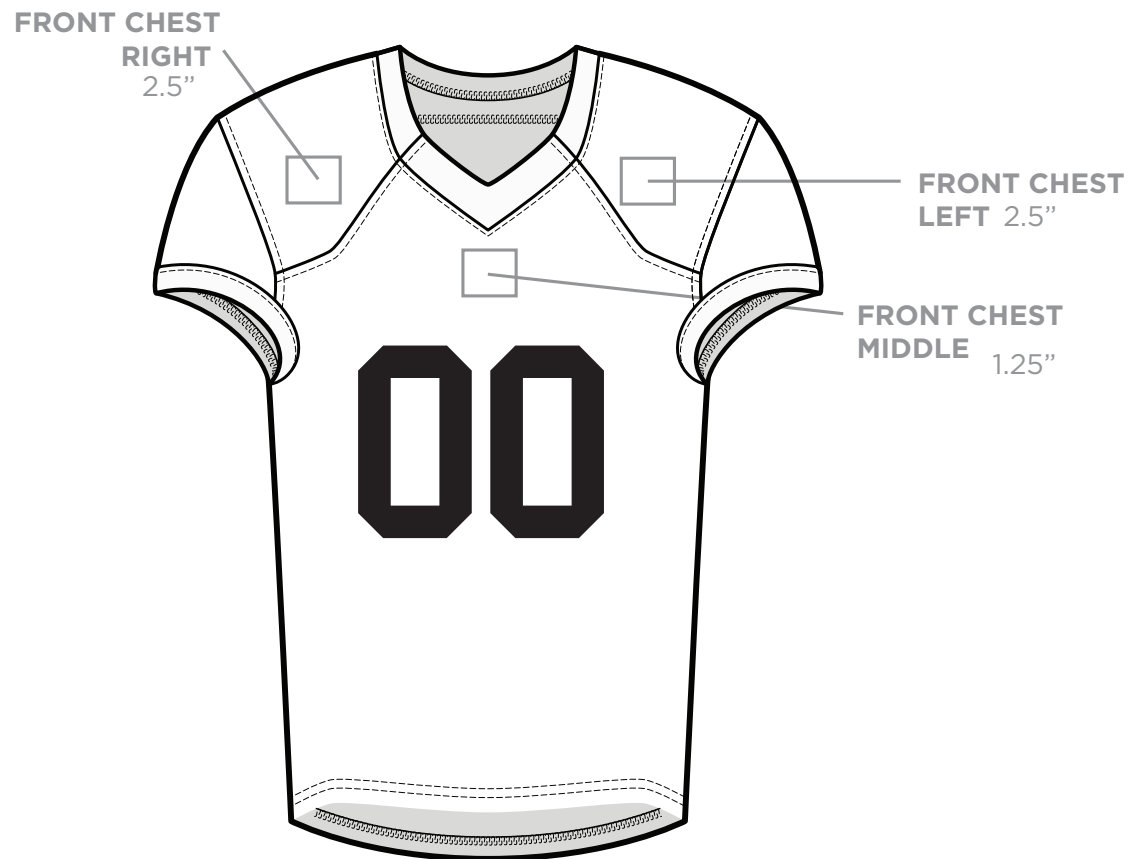
- Front Chest Left
- Front Chest Right
- Front Chest Middle
- Left/Right Sleeve
- Left Front Short
- Right Front Short



UNIFORM & APPAREL PATCH PLACEMENT - FOOTBALL

The SEC patch shall be used on the front of football jerseys. The size and placement options for the patches are:

1. 1.25" (in diameter) patch placed on the front-center collar of the jersey.
2. 2.5" (in diameter) patch placed on the front-left or right upper chest of the jersey.



UNIFORM & APPAREL PATCH PLACEMENT - EQUESTRIAN

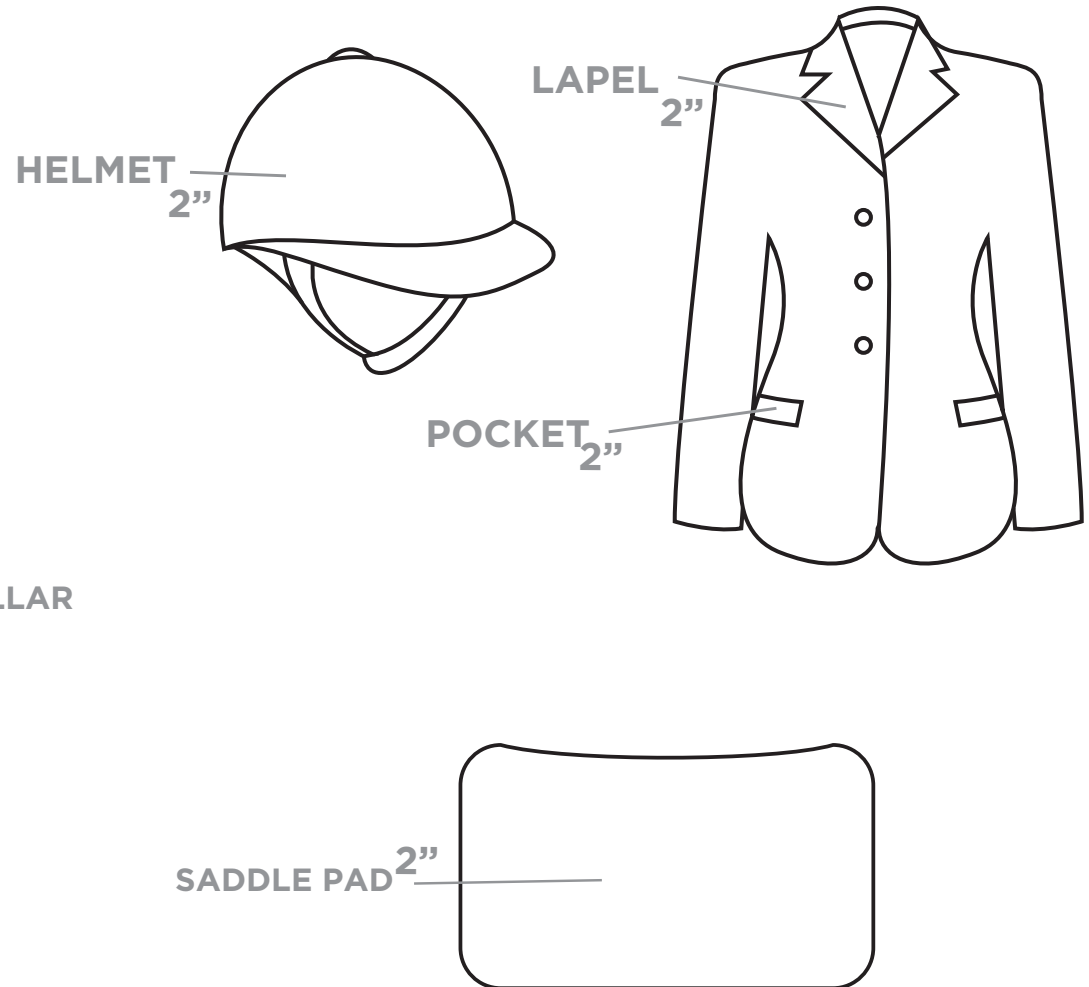
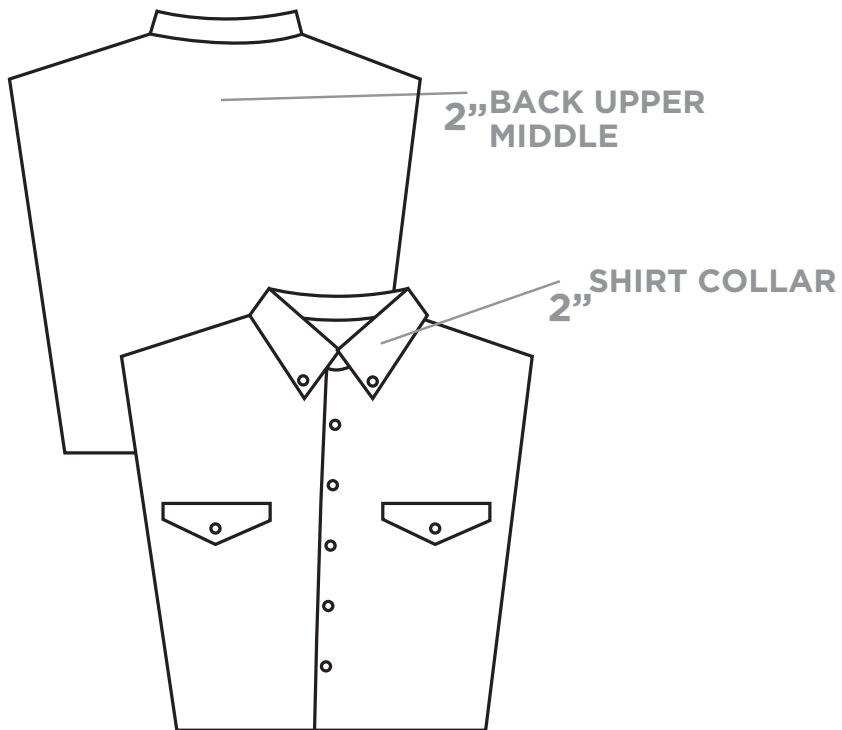
Due to varying uniform types for Equestrian (Hunt Seat and Western), either the SEC Uniform patch or SEC full color screen print mark is acceptable and should be done in an institution's approved color scheme. Placement options are as follows:

Hunt Seat

- Saddle Pad
- Lapel of Riding Jacket
- Pocket Flap of Riding Jacket
- Helmet

Western

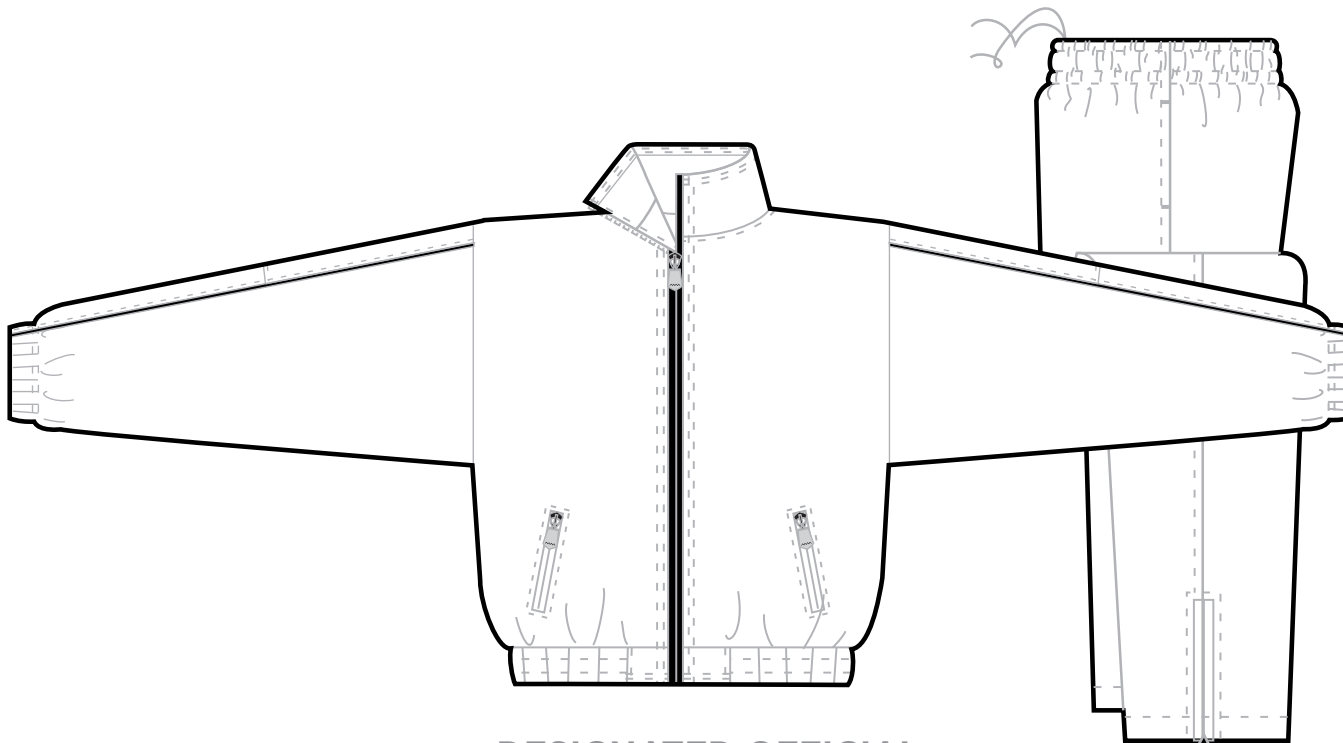
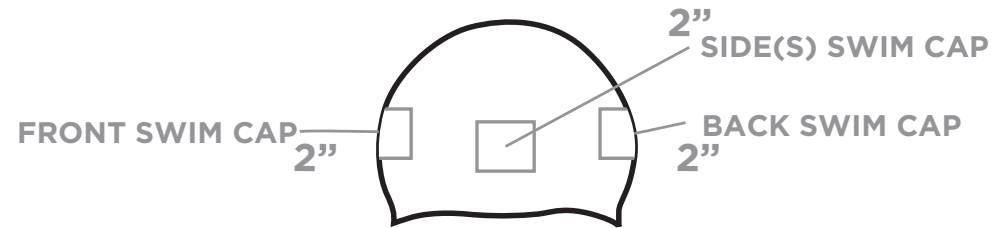
- Saddle Pad
- Shirt Collar
- Back Upper Middle (back tag area)



UNIFORM & APPAREL PATCH PLACEMENT - SWIMMING & DIVING

Due to varying uniform types for Swimming & Diving, either an SEC uniform patch or SEC full color screen print mark is acceptable and should be done in one of an institution's approved color schemes. Placement options are as follows:

- Front Swim Cap
- Side(s) Swim Cap
- Back Swim Cap
- Designated Official Warm-up Apparel (including parka)

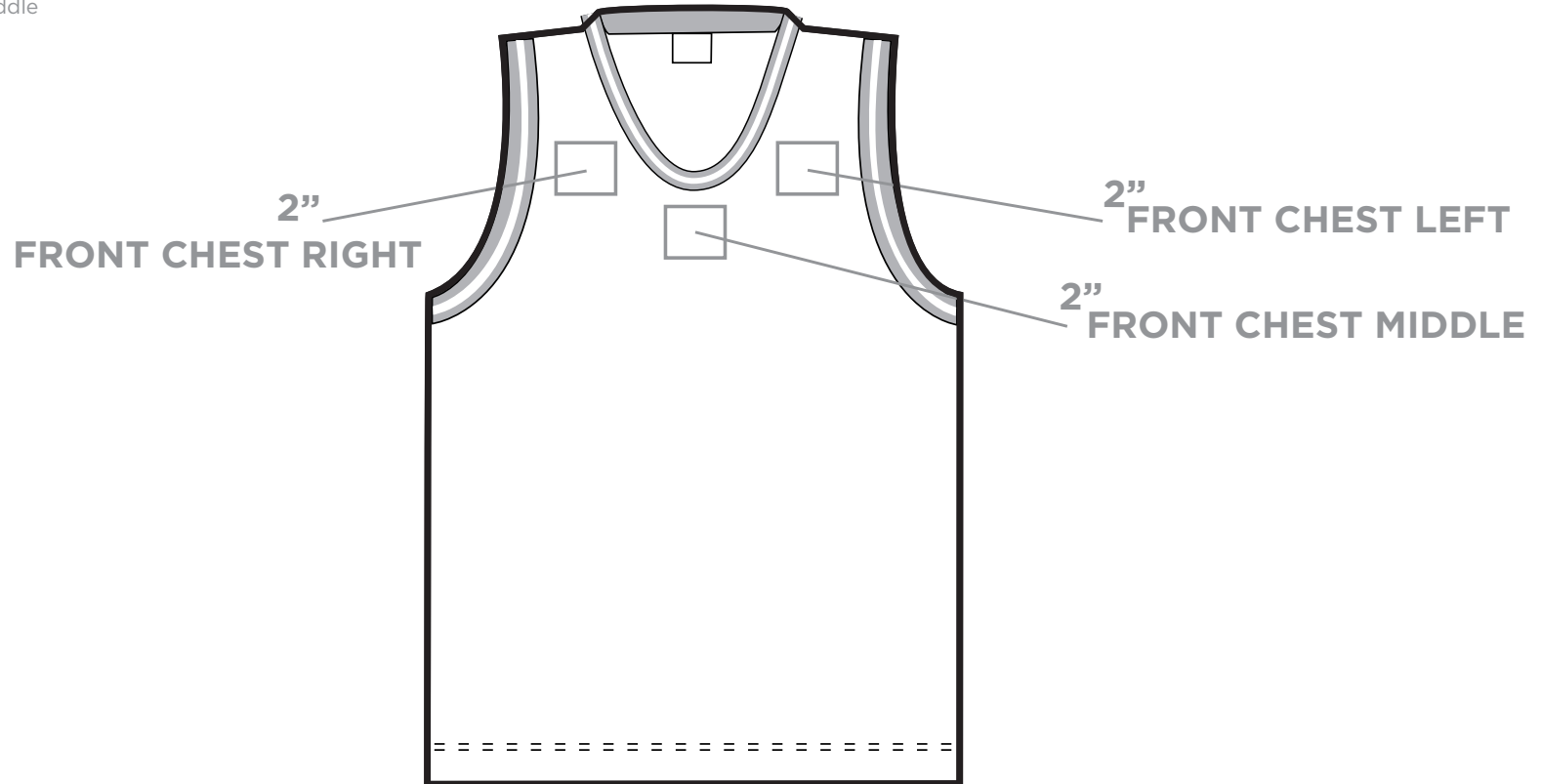


**DESIGNATED OFFICIAL
WARM-UP APPAREL**

UNIFORM & APPAREL PATCH PLACEMENT - BASKETBALL

Uniform patch to be worn on jersey above the number(s). Placement options are as follows:

- Front Chest Left
- Front Chest Right
- Front Chest Middle

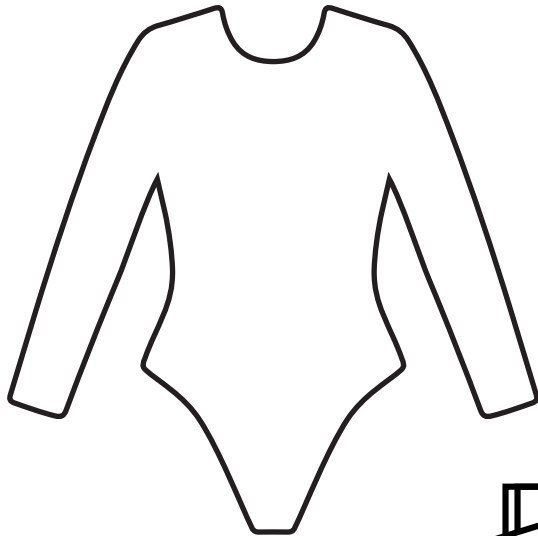


At the 2011 May Basketball Rules Committee Meeting, the NCAA Staff recommended that the current "optional" use of the authentication mark, manufacturers' mark and conference marks continue indefinitely as was in place in 2010-11. The guidelines for placement of the SEC Uniform Patch however remain as set forth in the SEC Brand Style Guide, which calls for the SEC patch to be placed on the front of the basketball jersey, above the numbers, and either on the left, center or right chest of the jersey. It is an institutional decision as to whether the NCAA Basketball patch and/ or manufacturer's marks are included on the uniforms (not required).

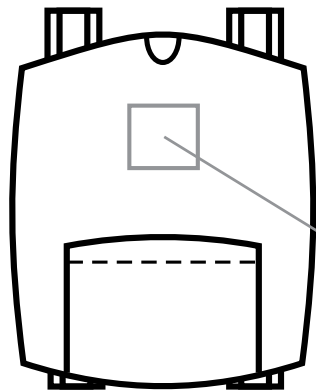
UNIFORM & APPAREL PATCH PLACEMENT - GYMNASTICS

Due to varying uniform types for Gymnastics, either an SEC uniform patch or SEC full color screen print mark is acceptable and should be done in one of an institution's approved color schemes. Placement options are as follows:

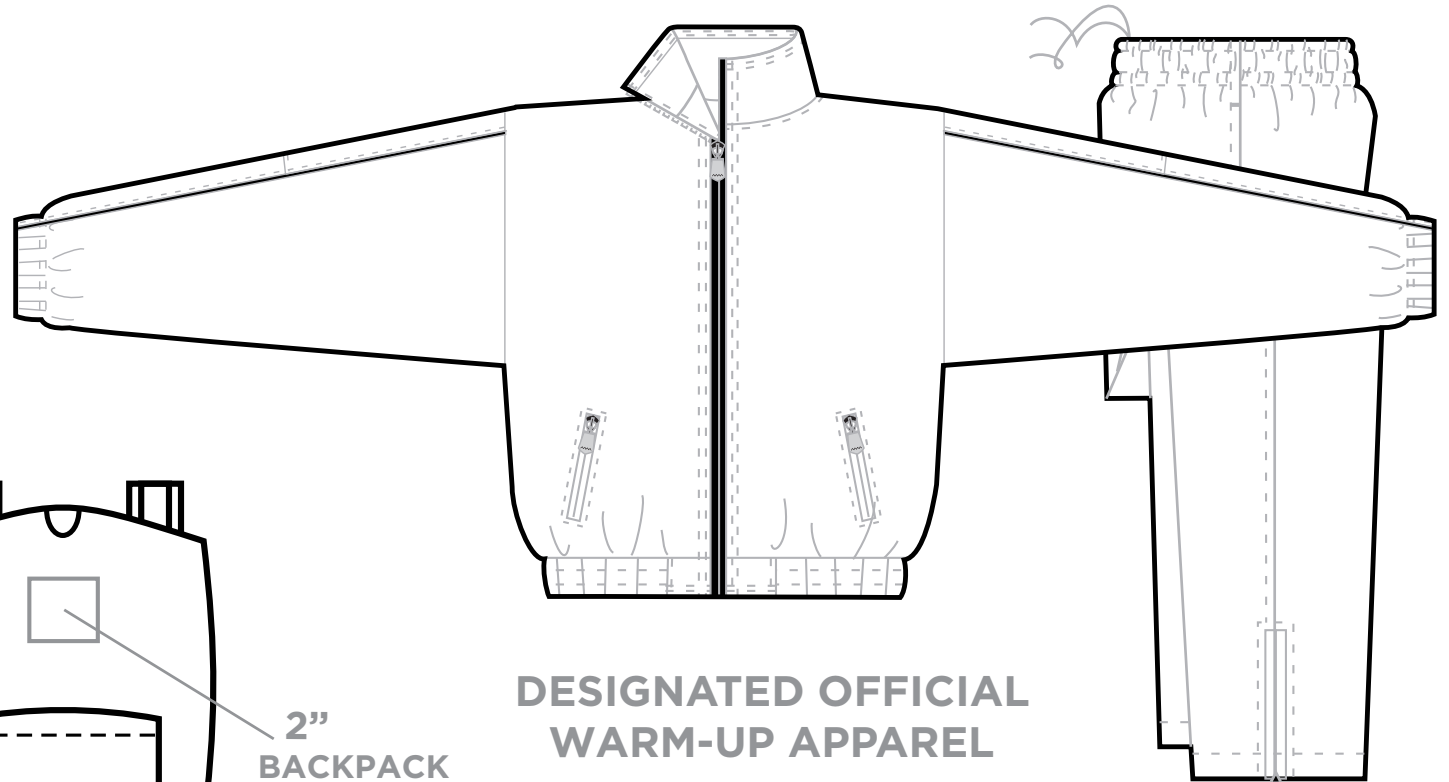
- Designated Official Warm-up Apparel
- Backpack
- Leotard



LEOTARD



**2"
BACKPACK**

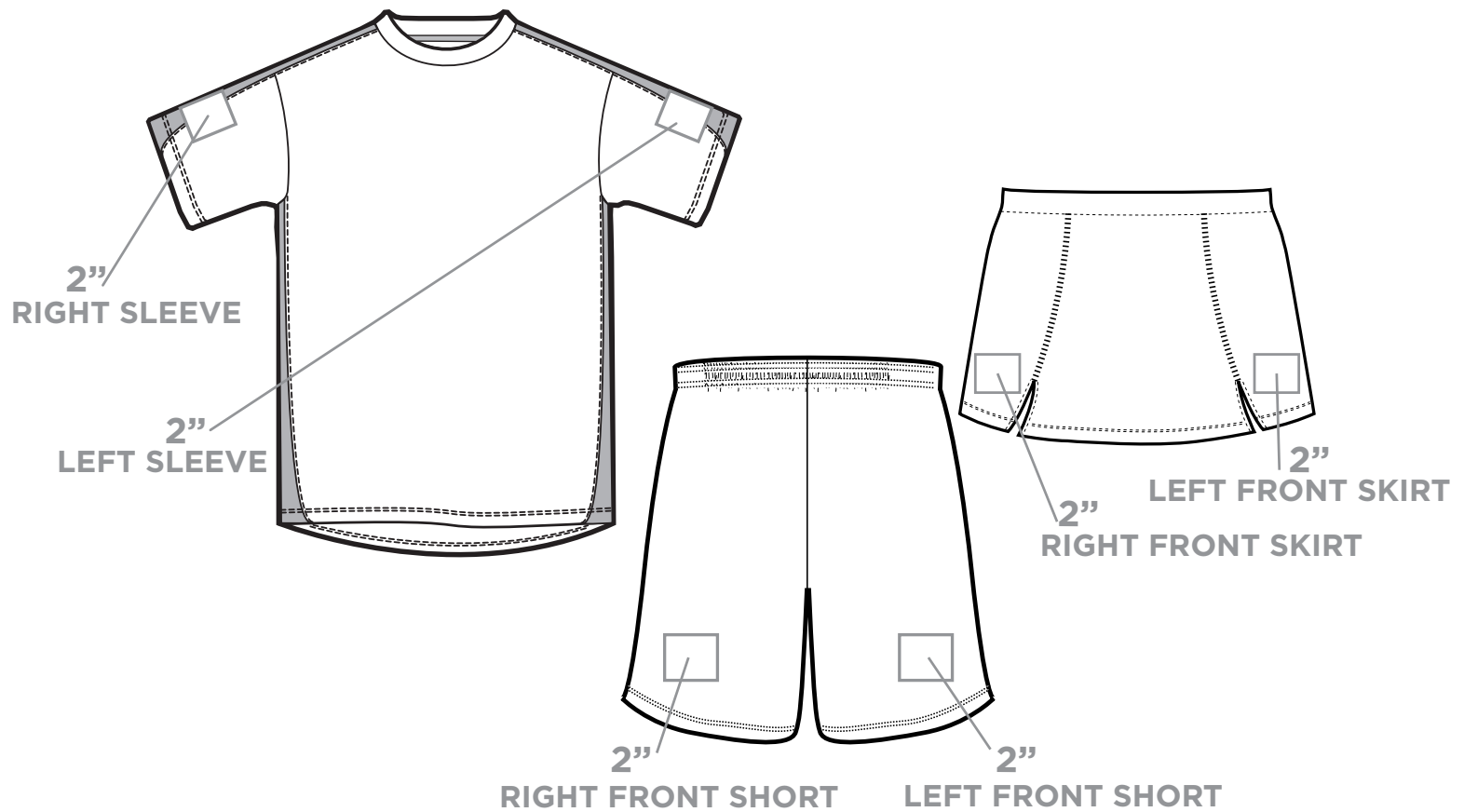


**DESIGNATED OFFICIAL
WARM-UP APPAREL**

UNIFORM & APPAREL PATCH PLACEMENT - TENNIS

Due to varying uniform types for Tennis, either an SEC uniform patch or SEC full color screen print mark is acceptable and should be done in one of an institution's approved color schemes. Placement options are as follows:

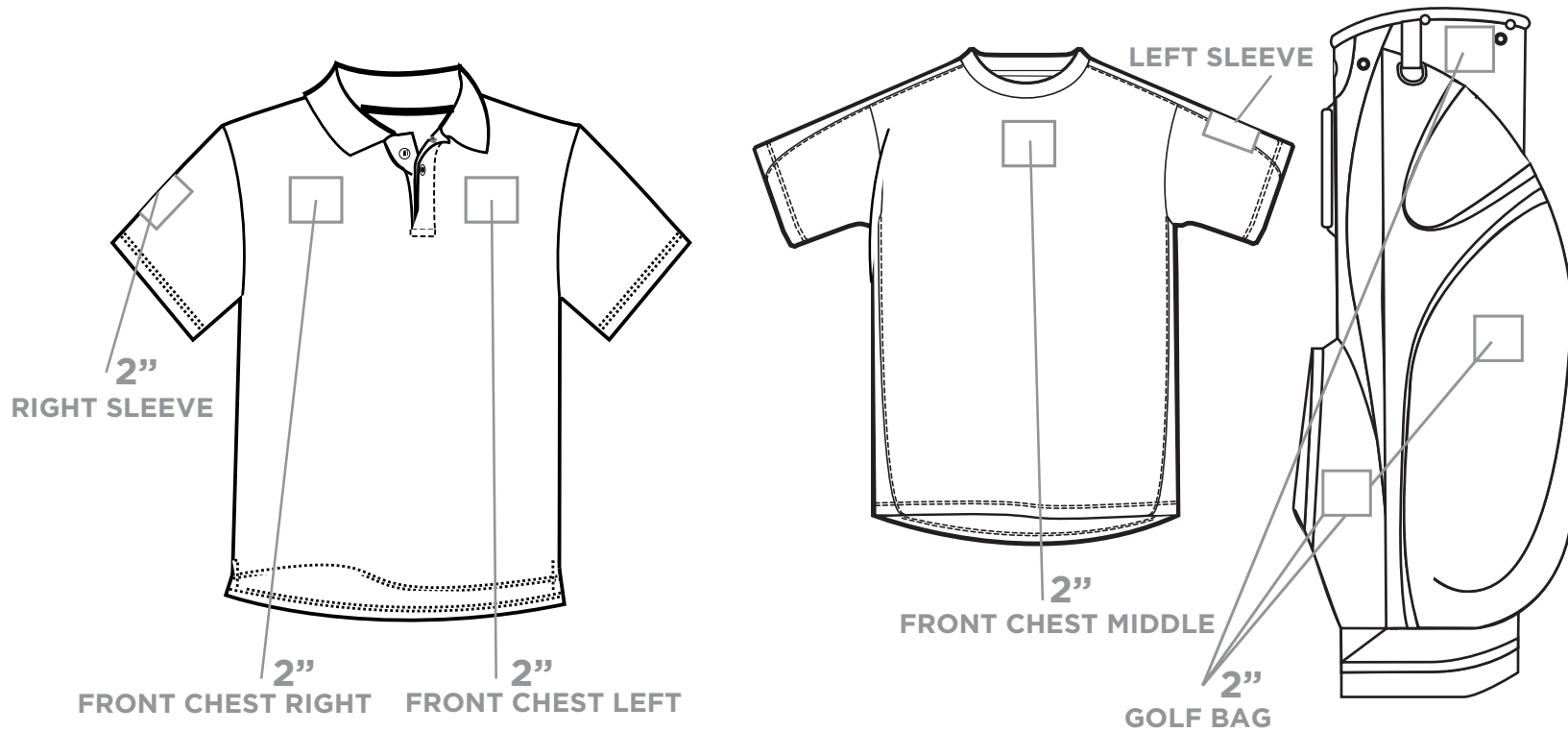
- Left Sleeve
- Right Sleeve
- Left Front Short/Skirt
- Right Front Short/Skirt



UNIFORM & APPAREL PATCH PLACEMENT - GOLF

Due to varying uniform types for Golf, either an SEC uniform patch or SEC full color screen print mark is acceptable and should be done in one of an institution's approved color schemes. Placement options are as follows:

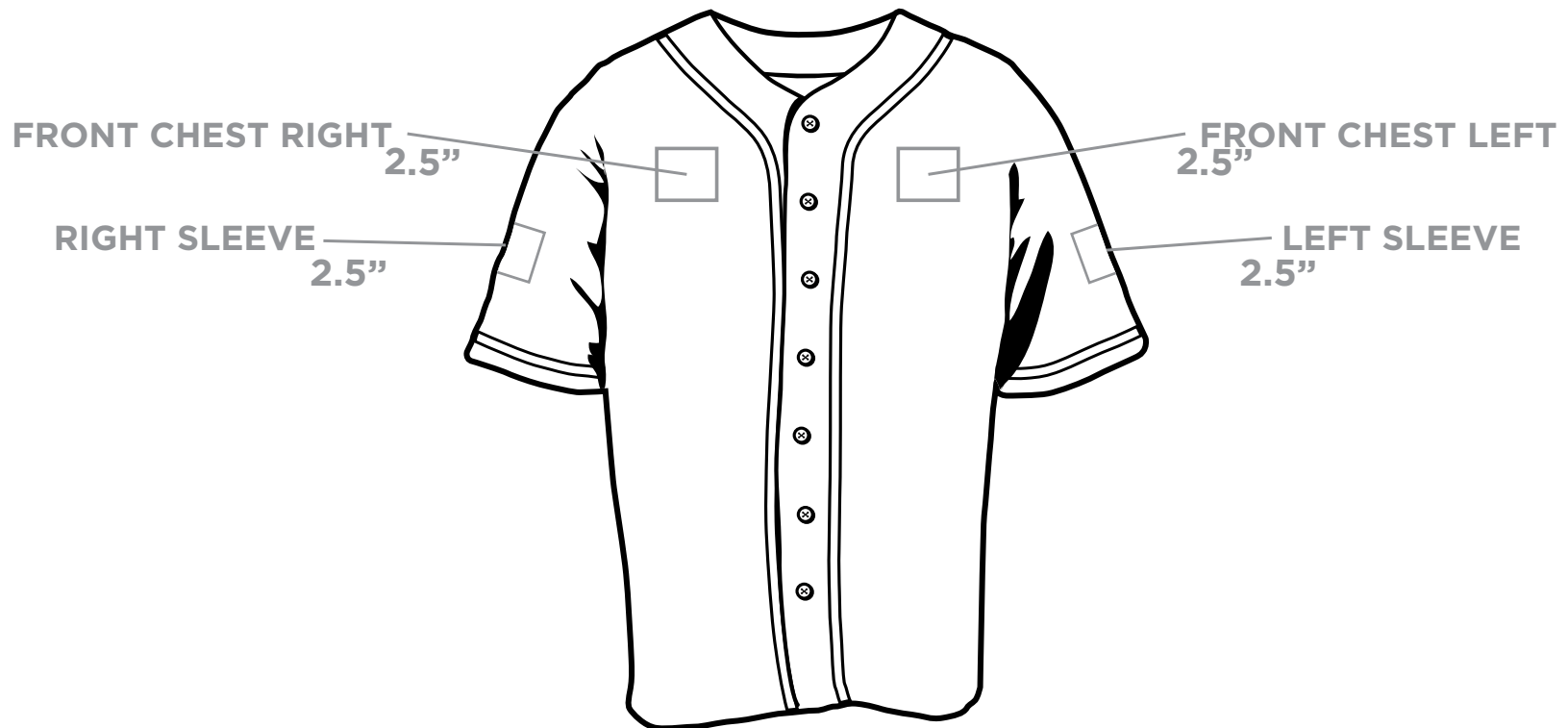
- Front Chest Left
- Front Chest Right
- Front Chest Middle
- Left Sleeve
- Right Sleeve
- Golf Bag



UNIFORM & APPAREL PATCH PLACEMENT - BASEBALL/SOFTBALL

Uniform patch to be worn on jersey. Placement options are as follows:

- Front Chest Left
- Front Chest Right
- Left Sleeve
- Right Sleeve



PLAYING SURFACE LOGO PLACEMENT OVERVIEW



This section of the style guide should assist member institutions with placement of the SEC logo on all competition surfaces and in all competition venues. Each institution should utilize the SEC primary logo in its approved school colors. Detailed information about acceptable SEC school color marks, including PMS colors, may be found on page 8 of this style guide.

World Class Athletic Surfaces has previously provided each institution with an SEC logo field stencil (15' x 15') for use in outdoor venues. Each institution should paint the SEC logo (in approved institutional colors) on fields in accordance with the placement guidelines outlined herein. Questions regarding the stencil or paint should be directed to World Class Athletic Surfaces. The contact at World Class Athletic Surfaces is:

Mike Williams
662.210.0035
mike@worldclasspaints.com

CSE Sports can produce SEC signage specific to each institution. Please contact CSE Sports directly with the measurements of any SEC signage needed (signage will be billed to the SEC upon approval). The contact at CSE Sports is:

Rob Thomas
205.908.7446
rthomas@signexp.com

PLAYING SURFACE LOGO PLACEMENT - SOCCER

SOCCER

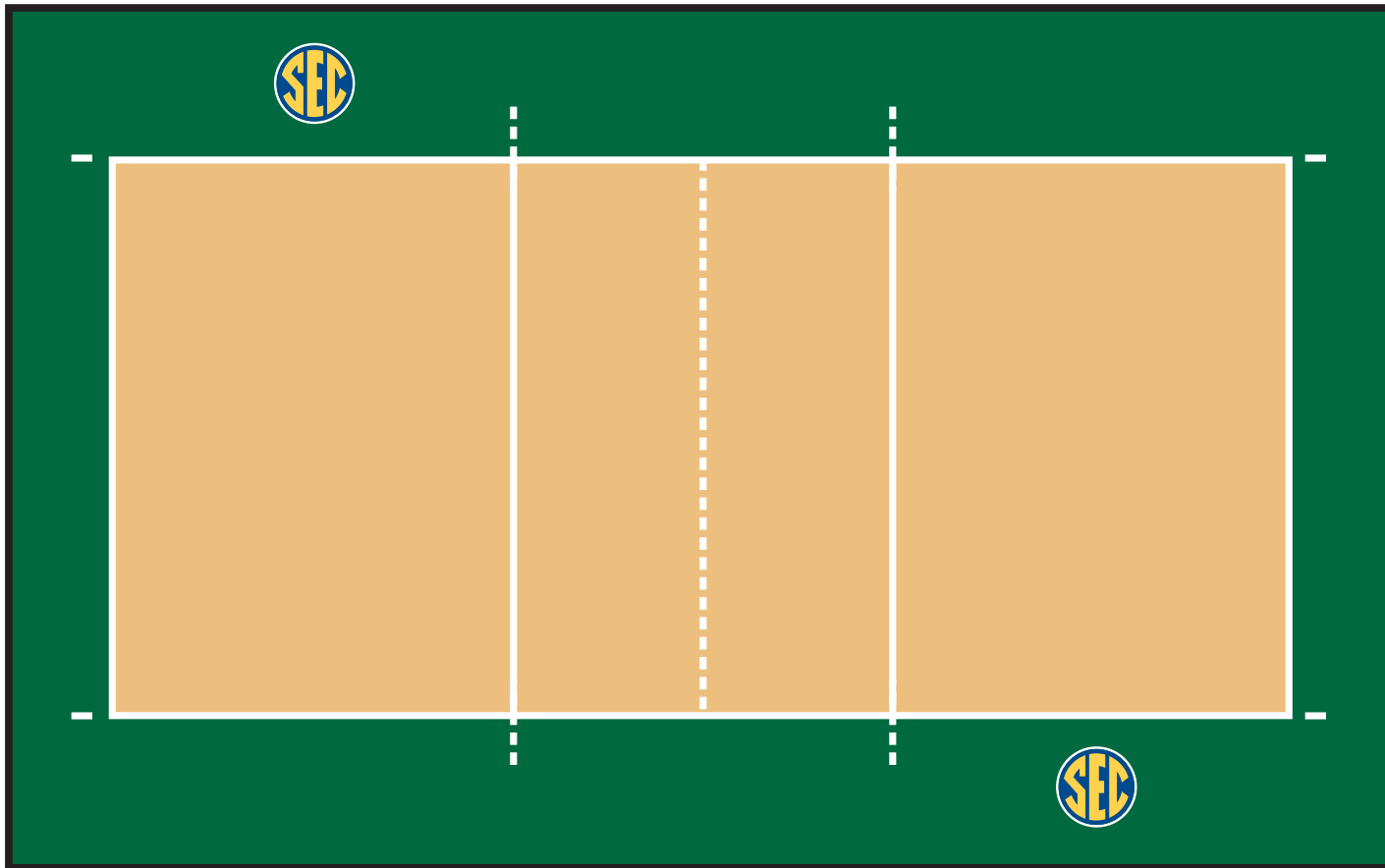
Logos painted in school approved colors on field.



PLAYING SURFACE LOGO PLACEMENT - VOLLEYBALL

VOLLEYBALL

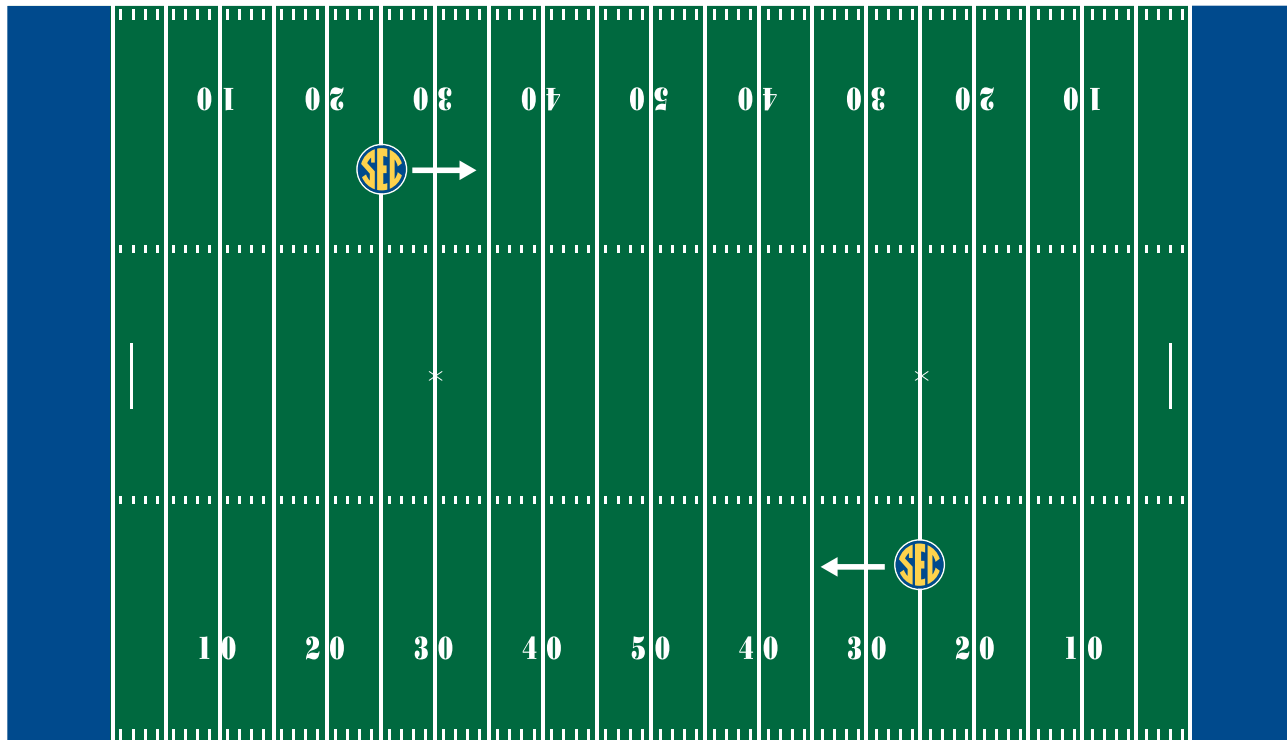
Logos applied in school approved colors on court.



PLAYING SURFACE LOGO PLACEMENT - FOOTBALL

FOOTBALL

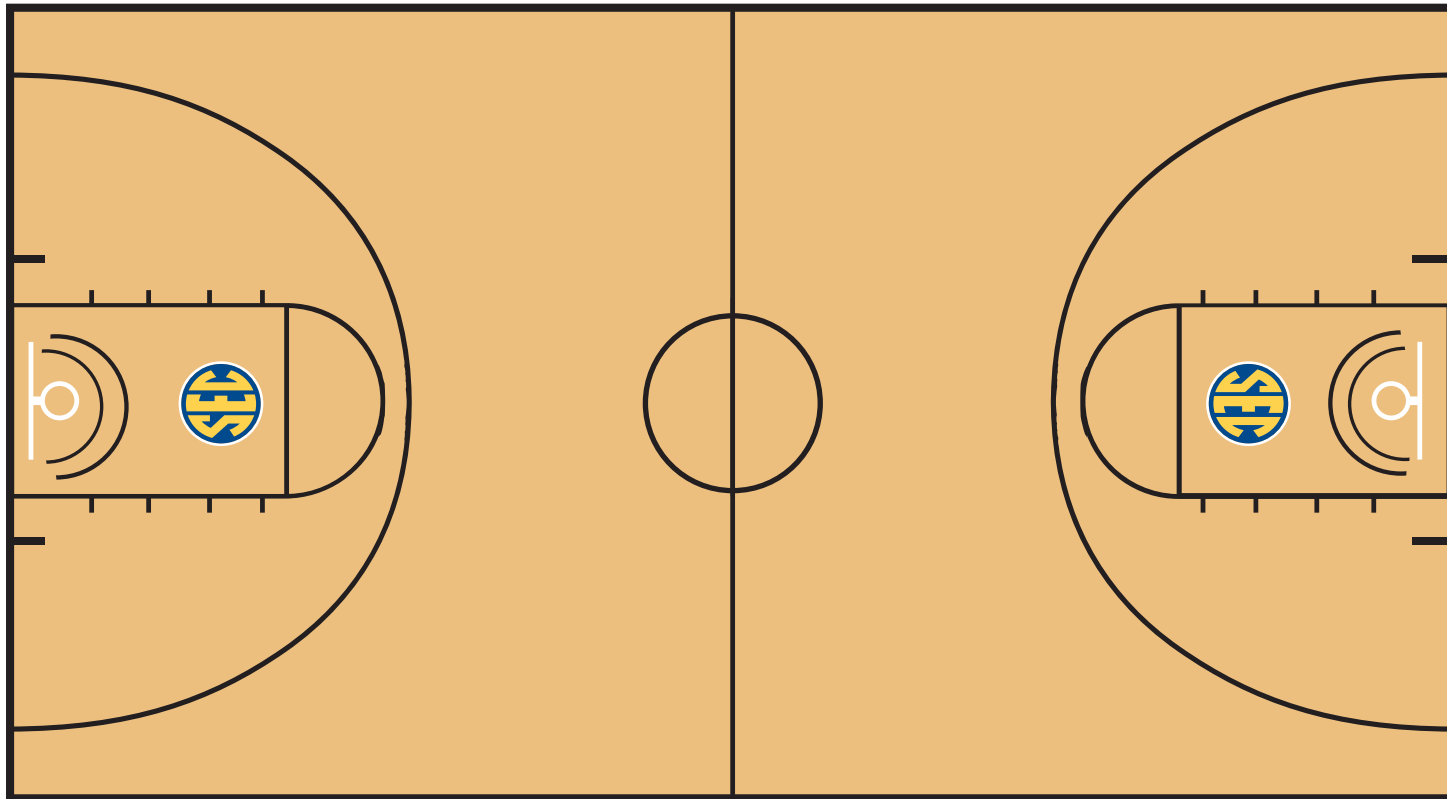
Logos painted in school approved colors on field between the numbers and hash marks. The logos should be painted diagonally from each other facing the press box (TV Cameras) on either the 25 or 35 yard line. Please note that any field logo must not completely obliterate a yard line.



PLAYING SURFACE LOGO PLACEMENT - BASKETBALL

BASKETBALL

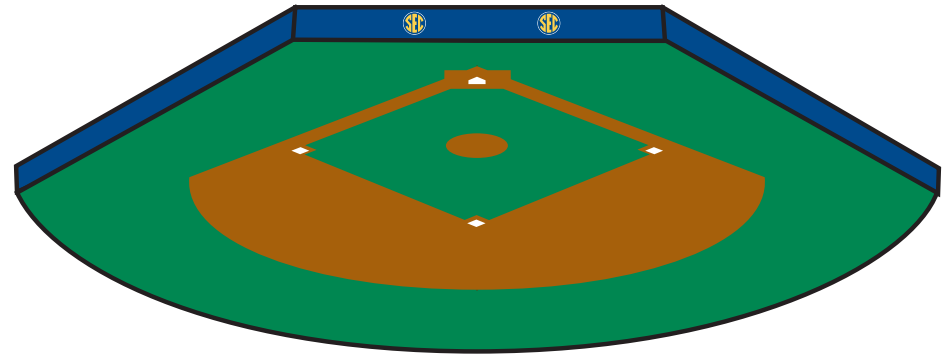
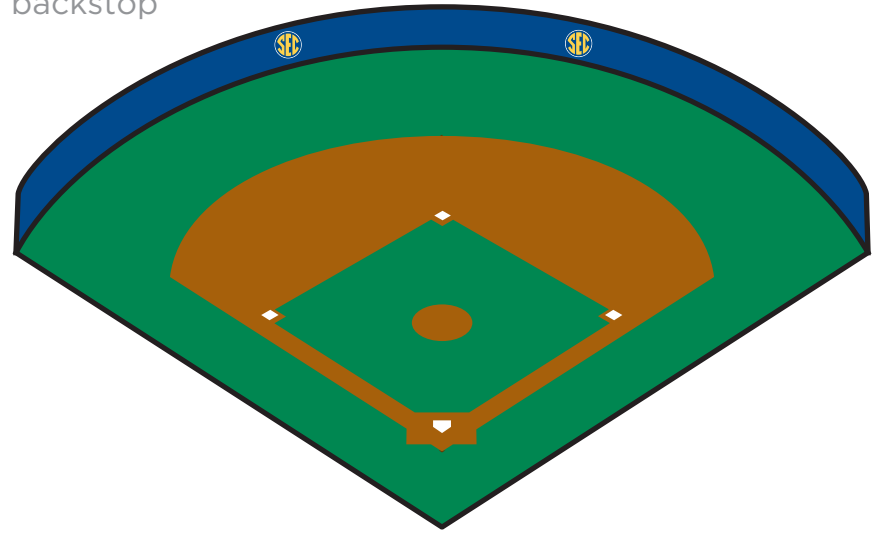
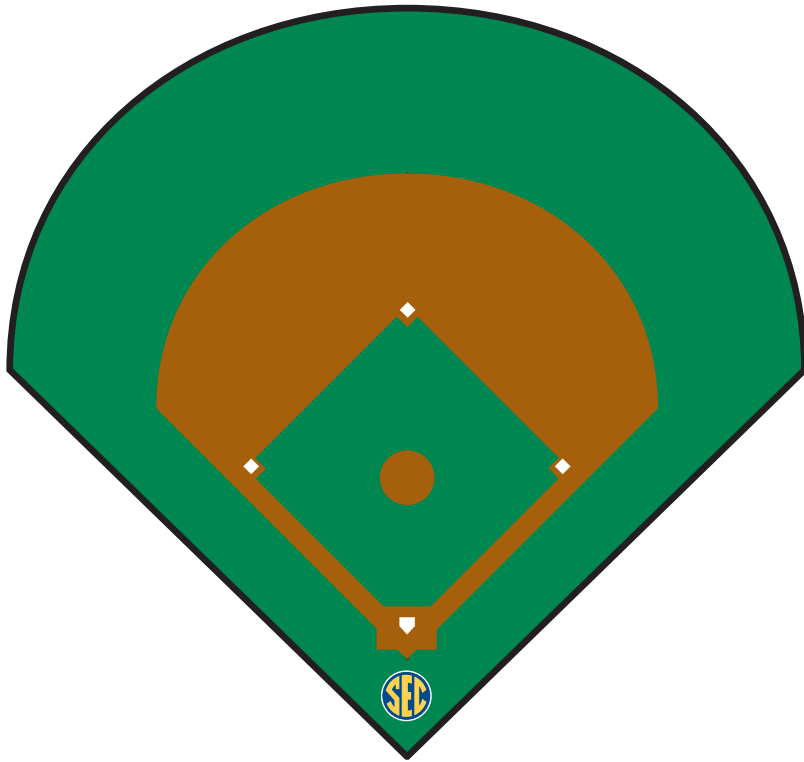
Logos to be applied in school colors or applicable floor matching color inside both free throw lanes facing the shooter.



PLAYING SURFACE LOGO PLACEMENT - BASEBALL/SOFTBALL

BASEBALL/SOFTBALL

Logos placed in school approved colors either on field, on backstop padding, or on interior outfield walls.



PLAYING SURFACE LOGO PLACEMENT - ALL OTHER SPORTS

CROSS-COUNTRY

- Logo painted in appropriate area (near start and/or finish) or minimum of two banners

EQUESTRIAN

- Logo painted in appropriate area or minimum of two banners in venue

SWIMMING & DIVING

- Minimum of two banners in venue

GYMNASTICS

- Minimum of two banners in venue

GOLF

- Logo painted in appropriate area or minimum of two banners in venue

TENNIS

- Minimum of two banners in venue

TRACK AND FIELD

- Logo painted on infield or minimum of two banners in venue

For questions or additional information regarding the SEC and its marks, please contact Charlie Hussey or B.C. Romano:

Southeastern Conference

2201 Richard Arrington Blvd. North

Birmingham, AL 35203

P 205.458.3000

F 205.458.3031