

SEC COACHES

SEC COACHES' RECORDS

ALABAMA

Coach	Tenure	Conference	
		W - L - T	Overall W - L - T
E.B. Beaumont	1892	-	2-2-0
Eli Abbott	1893-95, 1902	-	7-12-0
Otto Wagonhurst	1896	-	2-1-0
Allen McCants	1897	-	1-0-0
W.A. Martin	1899	-	3-1-0
M. Griffin	1900	-	2-3-0
M.H. Harvey	1901	-	2-1-2
W.B. Blount	1903-04	-	10-7-0
Jack Leavenworth	1905	-	6-4-0
J.W.H. Pollard	1906-09	-	20-4-5
Guy Lowman	1910	-	4-4-0
D.V. Graves	1911-14	-	21-12-3
Thomas Kelly	1915-17	-	17-7-1
Xen C. Scott	1919-22	-	29-9-3
Wallace Wade	1923-30	-	61-13-3
Frank Thomas	1931-46	-	115-24-7
Harold (Red) Drew	1947-54	59-16-6	54-29-7
J. B. Whitworth	1955-57	3-18-1	4-24-2
Paul (Bear) Bryant	1958-82	137-28-5	232-46-9
Ray Perkins	1983-86	14-9-1	32-15-1
Bill Curry	1987-89	14-6-0	26-10-0
Gene Stallings	1990-96	#38-16-0	#62-25-0
Mike DuBose	1997-2000	16-16-0	24-23-0
Dennis Franchione	2001-02	10-6	17-8
Mike Shula	2003-06	13-19	26-14
Joe Kines&	2006	0-0	0-1
Nick Saban	2007-	109-18	189-27

- Indicates forfeits imposed on Alabama by NCAA
& - Interim head coach for 2006 Independence Bowl

ARKANSAS

Coach	Tenure	Conference	
		W - L - T	Overall W - L - T
John C. Futrall	1894-96	-	5-2-0
B.N. Wilson	1897-98	-	4-1-1
Colbert Searles	1899-1900	-	5-2-2
Charles Thomas	1901-02	-	9-8-0
D.A. McDaniel	1903	-	3-4-0
A.D. Brown	1904-05	-	6-9-0
F.C. Longman	1906-07	-	5-8-3
Hugo Bezdek	1908-12	-	29-13-1
E.T. Pickering	1913-14	-	11-7-0
T.T. McConnell	1915-16	1-3-0	8-6-1
Norman Paine	1917-18	0-2-1	8-3-1
J.B. Craig	1919	1-2-0	3-4-0
G.W. McLaren	1920-21	4-1-1	8-5-3
Francis Schmidt	1922-28	14-13-2	42-20-3
Fred Thomsen	1929-41	26-42-3	56-61-1
George Cole	1942	0-6-0	3-7-0
John Tomlin	1943	1-4-0	2-7-0
Glen Rose	1944-45	3-7-1	8-12-1
John Barnhill	1946-49	10-13-1	22-17-3
Otis Douglas	1950-52	4-14-0	9-21-0
Bowden Wyatt	1953-54	7-5-0	11-10-0
Jack Mitchell	1955-57	8-9-1	17-12-1
Frank Broyles	1958-76	91-35-5	144-58-5
Lou Holtz	1977-83	37-18-1	60-21-2
Ken Hatfield	1984-89	36-10-0	55-17-1
Jack Crowe	1990-91	6-10-0	9-15-0
Joe Kines#	1992	3-4-1	3-6-1
Danny Ford	1993-97	•16-23-1	•26-30-1
Houston Nutt	1998-07	42-38	75-48
%Reggie Herring	2008	0-0	0-1
Bobby Petrino	2008-2011	17-15	34-17
John L. Smith	2012	2-6	4-8
Bret Bielema	2013-17	11-29	29-34
Chad Morris	2018-19	0-14	4-18
^Barry Lunney Jr.	2019	0-2	0-2
Sam Pittman	2020-	10-16	19-17

- Interim head coach after first game of 1992 season.
% - Interim head coach for 2008 Cotton Bowl.
* - Southwest Conference 1915-1991
• - Indicates game forfeited to Arkansas
^ - Interim head coach for final two games of 2019 season

AUBURN

Coach	Tenure	Conference	
		W - L - T	Overall W - L - T
Dr. George Petrie	1892	-	2-2-0
G.H. Harvey, D.M. Balliet	1893	-	3-0-2
F.M. Hall	1894	-	1-3-0
John Heisman	1895-99	-	12-4-2
Billy Watkins	1900-01	-	6-3-1
R.S. Kent	1902	-	2-2-1
Mike Harvey	1902	-	0-2-0
Billy Bates	1903	-	4-3-0
Mike Donahue	1904-06, 1908-22	-	99-35-5
W.S. Kienholz	1907	-	6-2-1
Boozier Pitts	1923-24; 1927	-	7-11-6
Dave Morey	1925-27	-	10-10-1
George Bohler	1928-29	-	3-11-0
John Floyd	1929	-	0-4-0
Chet Wynne	1930-33	2-2-0	22-15-2
Jack Meagher	1934-42	26-25-7	48-37-10
Carl Voyles	1944-47	4-17-0	15-22-0
Earl Brown	1948-50	2-18-2	3-22-4
Ralph (Shug) Jordan	1951-75	98-63-4	176-83-6
Doug Barfield	1976-80	15-14-1	29-25-1
Pat Dye	1981-92	48-27-1	99-39-4
Terry Bowden	1993-98	30-14-1	47-17-1
#Bill Oliver	1998	0-3	2-3
Tommy Tuberville	1999-08	51-29	85-40
Gene Chizik	2009-12	15-17	33-19
Gus Malzahn	2013-20	39-27	68-35
^Kevin Steele	2020	0-1	0-1
Bryan Harsin	2021-22	4-9	9-12
*Carnell Williams	2022	1-2	2-2

- Interim head coach after sixth game of 1998 season.
^ - Interim head coach for 2021 Citrus Bowl
* - Interim head coach for final four games of 2022 season

FLORIDA

Coach	Tenure	Conference	
		W - L - T	Overall W - L - T
Jack Forsythe	1906-08	-	14-6-2
G.E. Pyle	1909-13	-	26-7-3
Charles McCoy	1914-16	-	9-10-0
A.L. Busser	1917-19	-	7-8-0
William Kline	1920-22	-	19-8-2
Gen. VanFleet	1923-24	-	12-3-4
H.L. Sebring	1925-27	-	17-11-2
Charles Bachman	1928-32	-	27-18-3
D.K. (Dutch) Stanley	1933-35	5-11-1	14-13-2
Josh Cody	1936-39	6-14-2	17-24-2
Tom Lieb	1940-45	5-15-1	20-26-1
Ray (Bear) Wolf	1946-49	2-17-2	13-24-2
Bob Woodruff	1950-59	29-32-2	54-41-6
Ray Graves	1960-69	36-19-3	70-31-4
Doug Dickey	1970-78	28-28-1	58-42-2
Charley Pell	1979-84	14-16-1	33-26-2
Galen Hall*	1984-88	24-14-0	37-16-1
Gary Darnell#	1989	2-2-0	3-4-0
Steve Spurrier	1990-2001	82-12	122-27-1
Ron Zook	2002-04	16-8	23-14
Charlie Strong&	2004	0-0	0-1
Urban Meyer	2005-2010	36-12	65-15
Will Muschamp	2011-14	17-15	28-21
D.J. Durkin ^	2014	0-0	0-1
Jim McElwain	2015-17	16-6	22-12
Randy Shannon%	2017	0-2	1-3
Dan Mullen	2018-21	21-13	34-15
Greg Knox@	2021	0-0	1-1
Billy Napier	2022-	3-5	6-7

* - Replaced Charley Pell after third game of the 1984 season
- Interim head coach after fifth game of 1989 season
& - Interim head coach for 2004 Peach Bowl
^ - Interim head coach for 2015 Birmingham Bowl
% - Replaced Jim McElwain after seventh game of 2017 season
@ - Interim head coach for final two games of the 2021 season

GEORGIA

Coach	Tenure	Conference		Overall	
		W - L - T	W - L - T	W - L - T	W - L - T
Dr. Charles Herty	1892	-	-	1-1-0	
Ernest Brown	1893	-	-	2-2-1	
Robert Winston	1894	-	-	5-1-0	
Glenn "Pop" Warner	1895-96	-	-	7-4-0	
Charles McCarthy	1897-98	-	-	6-3-0	
Gordon Saussy	1899	-	-	2-3-1	
E.E. Jones	1900	-	-	2-4-0	
Billy Reynolds	1901-02	-	-	5-7-3	
M.M. Dickinson	1903, 1905	-	-	4-9-0	
Charles A. Barnard	1904	-	-	1-5-0	
W.S. Whitney	1906-07	-	-	6-7-2	
Branch Bocock	1908	-	-	5-2-1	
J. Coulter, Frank Dobson	1909	-	-	1-4-2	
W.A. Cunningham	1910-19	-	-	43-18-9	
H.J. Stegeman	1920-22	-	-	20-6-3	
George Woodruff	1923-27	-	-	30-16-1	
Harry Mehre	1928-37	12-12-2		59-34-6	
Joel Hunt	1938	1-2-1		5-4-1	
Wallace Butts	1939-60	67-60-5		140-86-9	
Johnny Griffith	1961-63	6-12-1		10-16-4	
Vince Dooley	1964-88	105-41-4		201-77-10	
Ray Goff	1989-95	24-28-0		46-34-1	
Jim Donnan	1996-2000	25-15-0		40-19	
Mark Richt	2001-2015	83-37		145-51	
Bryan McClendon ^	2015	0-0		1-0	
Kirby Smart	2016-	48-9		81-15	

^ - Interim head coach for 2016 TaxSlayer Bowl

KENTUCKY

Coach	Tenure	Conference		Overall	
		W - L - T	W - L - T	W - L - T	W - L - T
Unknown	1891	-	-	1-1-0	
A.M. Miller	1892	-	-	2-4-1	
John A. Thompson	1892-93	-	-	5-2-1	
W.P. Finney	1894	-	-	5-2-0	
Charles Mason	1895	-	-	4-5-0	
Dudley Short	1896	-	-	3-6-0	
Lyman B. Eaton	1897	-	-	2-4-0	
W.R. Bass	1898-99	-	-	12-2-2	
W.H. Kiler	1900-01	-	-	6-12-1	
E.W. McLeod	1902	-	-	3-5-1	
C.A. Wright	1903	-	-	7-1-0	
F.E. Schact	1904	-	-	15-4-1	
J. White Guyn	1906-08	-	-	17-7-1	
R. Sweetland	1909-10, 1912	-	-	23-5-0	
P.P. Douglass	1911	-	-	7-3-0	
Alpha Brumage	1913-14	-	-	11-5-0	
J.J. Tigert	1915-16	-	-	10-2-3	
S.A. Boles	1917	-	-	3-5-1	
Andy Gill	1918-19	-	-	5-5-1	
W.J. Juneau	1920-22	-	-	13-10-2	
J. Winn	1923	-	-	4-3-2	
Fred J. Murphy	1924-26	-	-	12-14-1	
Harry Gammage	1927-33	2-3-0		32-25-5	
Chet Wynne	1934-37	5-14-0		20-19-0	
A.D. Kirwan	1938-44	4-22-3		24-28-4	
Bernie Shively	1945	0-5-0		2-8-0	
Paul (Bear) Bryant	1946-53	22-18-4		60-23-5	
Blanton Collier	1954-61	21-34-3		41-36-3	
Charlie Brandshaw	1962-68	12-30-2		25-41-4	
John Ray	1969-72	4-24-0		10-33-0	
Fran Curci	1973-81	25-30-0		47-51-2	
Jerry Claiborne	1982-89	13-37-0		41-46-3	
Bill Curry	1990-96	14-40-0		26-52-0	
Hal Mumme	1997-2000	10-22-0		20-26	
Guy Morriss	2001-02	4-12		9-14	
Rich Brooks	2003-2009	16-40		39-47	
Joker Phillips	2010-12	4-20		13-24	
Mark Stoops	2013-	32-50		66-59	

LSU

Coach	Tenure	Conference		Overall	
		W - L - T	W - L - T	W - L - T	W - L - T
Dr. Charles E. Coates	1893	-	-	0-1-0	
Albert P. Simmons	1894-95	-	-	5-1-0	
Allen W. Jeardeau	1896-97	-	-	7-1-0	
Edmond A. Chavanne	1898, 1900	-	-	3-2-0	
John P. Gregg	1899	-	-	3-2-0	
W.S. Boreland	1901-03	-	-	15-7-0	
D.A. Killian	1904-06	-	-	8-6-2	
Edgar R. Wingard	1907-08	-	-	17-3-0	
Joe G. Pritchard	1909	-	-	4-1-0	
John W. Mayhew	1910	-	-	3-6-0	
James K. Dwyer	1911-13	-	-	16-7-2	
E.T. McDonald	1914-16	-	-	14-7-1	
Dana X. Bible	1916	-	-	1-0-2	
Wayne Sutton	1917	-	-	3-5-0	
Irving R. Pray	1916, 1919, 1922	-	-	11-9-0	
Branch Bocock	1920-21	-	-	11-4-2	
Mike Donahue	1923-27	-	-	23-19-3	
Russ Cohen	1928-31	-	-	23-13-1	
Biff Jones	1932-34	7-2-2		20-5-6	
Bernie H. Moore	1935-47	23-28-4		83-39-6	
Gaynell Tinsley	1948-54	17-25-6		35-34-6	
Paul F. Dietzel	1955-61	26-16-2		46-23-3	
Charlie McClendon	1962-79	62-38-0		137-59-7	
Jerry Stovall	1980-83	9-13-2		22-21-2	
Bill Arnsperger	1984-86	13-3-2		26-8-2	
Mike Archer	1987-90	15-12-0		27-18-1	
Curley Hallman	1991-94	10-23-0		16-28-0	
Gerry DiNardo	1995-	18-20-1		32-24-1	
#Hal Hunter	1999	1-0		1-0	
Nick Saban	2000-04	28-12		48-16	
Les Miles	2005-16	62-28		114-34	
Ed Orgeron^	2016-21	31-17		51-20	
Brad Davis*	2021	0-0		0-1	
Brian Kelly	2022	6-2		10-4	

- Served as interim head coach last game of season

^ - Served as interim head coach for seven games of the 2016 season

* - Interim head coach for the final game of the 2021 season

OLE MISS

Coach	Tenure	Conference		Overall	
		W - L - T	W - L - T	W - L - T	W - L - T
Dr. A.L. Bondurant	1893	-	-	4-1-0	
C.D. Clark	1894	-	-	6-1-0	
H.L. Fairbanks	1895	-	-	2-1-0	
J.W. Holister	1896	-	-	1-2-0	
T.G. Scarbrough	1898	-	-	1-1-0	
W.H. Lyon	1899	-	-	3-4-0	
Z.N. Estes, Jr.	1900	-	-	0-3-0	
Daniel Martin, William Shibley	1901	-	-	2-4-0	
Daniel Martin	1902	-	-	4-3-0	
Mike Harvey	1903-04	-	-	6-4-1	
T.S. Hammond	1906	-	-	4-2-0	
Frank Mason	1907	-	-	0-6-0	
Frank Kyle	1908	-	-	3-5-0	
Dr. N.P. Stauffer	1909-11	-	-	17-7-2	
Leo DeTray	1912	-	-	5-3-0	
William Driver	1913-14	-	-	11-7-2	
Fred Robbins	1915-16	-	-	5-12-0	
C.R. (Dudy) Noble	1917-18	-	-	2-7-1	
R.L. Sullivan	1919-21	-	-	11-13-0	
R.A. Cowell	1922-23	-	-	8-11-1	
Chester Barnard	1924	-	-	4-5-0	
Homer Hazel	1925-29	-	-	21-22-3	
Ed. L. Walker	1930-37	7-13-3		38-38-8	
Harry Mehre	1938-45	15-17-1		39-26-1	
Harold (Red) Drew	1946	1-6-0		2-7-0	
John Vaught	1947-70, 73	106-41-10		190-60-12	
Billy Kinard	1971-73	6-7-0		16-9-0	
Ken Cooper	1974-77	12-14-0		21-23-0	
Steve Sloan	1978-82	8-18-1		20-34-1	
Billy Brewer	1983-93	#34-40-0		68-54-3	
Joe Lee Dunn	1994	2-6-0		4-7-0	
Tommy Tuberville	1995-1998	12-20-0		25-20-0	
*David Cutcliffe	1998-2004	25-23		44-29	
Ed Orgeron	2005-2007	3-21		10-25	
Houston Nutt	2008-2011	#9-22		#18-26	
Hugh Freeze	2012-16	#6-21		#12-25	
Matt Luke	2017-19	10-18		15-21	
Lane Kiffin	2020-	14-11		23-13	

- Indicates games forfeited or vacated by NCAA

* - Named head coach prior to 1998 Independence Bowl



COACHES

MISSISSIPPI STATE

Coach	Tenure	Conference		Overall	
		W - L - T		W - L - T	
Dr. Charles Herty	1892	—	—	1-1-0	—
W.M. Matthews	1895	—	—	0-2-0	—
J.B. Hildebrand	1896	—	—	0-4-0	—
L.B. Harvey	1901	—	—	2-2-1	—
L. Gwinn	1902	—	—	1-4-1	—
Dan Martin	1903-06	—	—	10-11-3	—
Fred Furman	1907-08	—	—	9-7-0	—
W.D. Chadwick	1909-13	—	—	29-12-2	—
E.C. Hayes	1914-16	—	—	15-8-2	—
Sid Robinson	1917-19	—	—	15-5-0	—
Fred Holtkamp	1920-21	—	—	9-7-1	—
C.R. (Dudy) Noble	1922	—	—	3-4-2	—
Earl Able	1923-24	—	—	10-6-2	—
Bernie Bierman	1925-26	—	—	8-8-1	—
J.W. Hancock	1927-29	—	—	8-12-4	—
Chris Cagle	1930	—	—	2-7-0	—
Ray Dauber	1931-32	—	—	5-11-0	—
Ross McKechnie	1933-34	1-10-1	—	7-12-1	—
Ralph Sasse	1935-37	8-7-0	—	20-10-2	—
Emerson (Spike) Nelson	1938	1-4-0	—	4-6-0	—
Allyn McKeen	1939-48	29-16-2	—	65-19-3	—
Arthur (Slick) Morton	1949-51	5-15-0	—	8-18-1	—
Murray Warmath	1952-53	6-5-3	—	10-6-3	—
Darrell Royal	1954-55	7-7-0	—	12-8-0	—
Wade Walker	1956-61	8-30-2	—	22-32-2	—
Paul Davis	1962-66	9-22-2	—	20-28-2	—
Charley Shira	1967-72	5-32-1	—	16-45-2	—
Bob Tyler	1973-78	7-30-0	—	21-44-2	—
Emory Bellard	1979-85	15-27-0	—	37-42-0	—
Rockey Felker	1986-90	5-23-0	—	21-34-0	—
Jackie Sherrill	1991-2003	#43-59-1	—	#75-75-2	—
Sylvester Croom	2004-08	10-30	—	21-38	—
Dan Mullen	2009-17	33-39	—	69-46	—
Greg Knox^	2017	0-0	—	1-0	—
Joe Moorhead	2018-19	7-9	—	14-12	—
Mike Leach	2020-22	11-15	—	19-17	—
Zach Arnett	2022-	0-0	—	1-0	—

- Indicates game forfeited to Mississippi State

^ - Interim head coach for 2017 Gator Bowl

MISSOURI

Coach	Tenure	Conference		Overall	
		W - L - T		W - L - T	
Gary Pinkel	2012-2015	17-15	—	33-19	—
Barry Odom	2016-19	13-19	—	25-25	—
Elijah Drinkwitz	2020-	11-15	—	17-19	—

SOUTH CAROLINA

Coach	Tenure	Conference		Overall	
		W - L - T		W - L - T	
W.A. Whaley	1896	—	—	1-3-0	—
W.P. Murphy	1897	—	—	0-3-0	—
W. Wertenbaker	1898	—	—	1-2-0	—
I.O. Hunt	1899-90	—	—	6-6-0	—
B.W. Dickson	1901	—	—	3-4-0	—
C.R. Williams	1902-03	—	—	14-3-0	—
Christie Benet	1904-05, 1908-09	—	—	14-15-3	—
Douglas McKay	1907	—	—	3-0-0	—
John H. Neff	1910-11	—	—	5-8-2	—
N.B. Edgerton	1912-15	—	—	19-13-3	—
Rice Warren	1916	—	—	3-6-0	—
Dixon Foster	1917, 1991	—	—	4-12-1	—
Frank Dobson	1918	—	—	2-1-1	—
Sol Metzger	1920-24	—	—	26-18-2	—
Branch Bocock	1925-26	—	—	13-7-0	—
Harry Lightsey	1927	—	—	4-5-0	—
Billy Lavall	1928-34	5-3-0	—	39-26-6	—
Don McCallister	1935-37	5-11-1	—	13-20-1	—
Rex Enright	1938-42, 1946-55	36-43-3	—	64-69-7	—
J.P. Moran	1943	2-1-0	—	5-2-0	—
William Newton	1944	1-3-0	—	3-4-2	—
Johnnie McMillan	1945	0-3-2	—	2-4-3	—
Warren Giese	1956-60	19-15-1	—	28-21-1	—
Marvin Bass	1961-65	13-18-1	—	17-29-4	—
Paul Dietzel	1966-74	18-10-1	—	42-53-1	—
Jim Carlen	1975-81	—	—	45-36-1	—
Richard Bell	1982	—	—	4-7-0	—
Joe Morrison	1983-88	—	—	39-28-2	—
Sparky Woods	1989-93	5-11-0	—	24-28-3	—
Brad Scott	1995-98	13-26-1	—	23-32-1	—
Lou Holtz	1999-2004	19-29	—	33-37	—
Steve Spurrier	2005-2015	44-40	—	86-49	—
#Shawn Elliott	2015	1-3	—	1-5	—
Will Muschamp	2016-19	17-22	—	28-30	—
^Mike Bobo	2020	0-3	—	0-3	—
Shane Beamer	2021-	7-9	—	15-11	—

- Interim head coach for six games of 2015 season

^ - Interim head coach for final three games of 2020 season

TENNESSEE

Coach	Tenure	Conference		Overall	
		W - L - T		W - L - T	
J.A. Pierce	1899-1900	—	—	—	8-4-1
George Kelley	1901	—	—	—	3-3-2
H.F. Fisher	1902-03	—	—	—	10-7-0
S.D. Crawford	1904	—	—	—	3-5-1
J.D. DePree	1905-06	—	—	—	4-11-3
George Levene	1907-09	—	—	—	15-10-3
Andrew A. Stone	1910	—	—	—	3-5-1
Z.G. Clevenger	1911-15	—	—	—	26-15-2
John R. Bender	1916-20	—	—	—	18-5-4
M.B. Banks	1921-25	—	—	—	27-15-3
Robert R. Neyland	1926-34, 36-40, 46-52	62-15-5	—	173-31-12	—
W. H. (Bill) Britton	1935	2-3-0	—	4-5-0	—
John H. Barnhill	1941-45	15-3-1	—	33-6-0	—
Harvey L. Robinson	1953-54	4-7-1	—	10-10-1	—
Bowden Wyatt	1955-62	29-23-4	—	49-29-4	—
Jim McDonald	1963	3-5-0	—	5-5-0	—
Doug Dickey	1964-69	21-10-4	—	46-15-4	—
Bill Battle	1970-76	22-18-1	—	59-22-4	—
Johnny Majors	1977-92	57-40-3	—	115-62-8	—
Phillip Fulmer#	1992-08	•96-34	—	•152-52	—
Lane Kiffin	2009	4-4	—	7-6	—
Derek Dooley	2010-12	5-18	—	15-21	—
% - Jim Chaney	2012	1-0	—	1-0	—
Butch Jones	2013-17	14-24	—	34-27	—
Brady Hoke^	2017	0-2	—	0-2	—
Jeremy Pruitt	2018-20	10-16	—	16-19	—
Josh Heupel	2021-	10-6	—	18-8	—

- Interim head coach for four games of 1992 season.

• - Includes game forfeited to Tennessee

% - Interim head coach final game of 2012 season

^ - Interim head coach for final two games of 2017 season

TEXAS A&M

Coach	Tenure	Conference		Overall	
		W - L - T		W - L - T	
Kevin Sumlin	2012-17	25-23	—	51-26	—
Jeff Banks^	2017	0-0	—	0-1	—
Jimbo Fisher	2018-	23-18	—	39-21	—

^ - Interim head coach for 2017 Belk Bowl

VANDERBILT

Coach	Tenure	Conference		Overall	
		W - L - T		W - L - T	
Elliott H. Jones	1890-92	—	—	—	8-5-0
W.J. Keller	1893	—	—	—	6-1-0
Henry Thornton	1894	—	—	—	7-1-0
C.L. Upton	1895	—	—	—	5-3-1
R.G. Acton	1896-1898	—	—	—	10-7-3
J.L. Crane	1899-1900	—	—	—	11-6-1
W.H. Watkins	1901-02	—	—	—	14-2-1
J.H. Henry	1903	—	—	—	6-1-1
Dan McGugin	1904-17, 19-34	6-5-2	—	197-55-19	—
Ray Morrison	1935-39	15-15-1	—	25-20-2	—
H.R. (Red) Sanders	1940-42, 46-48	16-20-2	—	36-22-2	—
E.H. (Herc) Alley	1943	0-0-0	—	5-0-0	—
Doby Bartling	1944-45	2-4-0	—	6-6-1	—
W.M. (Bill) Edwards	1945-52	11-17-1	—	21-19-2	—
Arthur L. Guepe	1953-62	18-43-6	—	39-54-7	—
Jack Green	1963-66	2-19-3	—	7-29-4	—
Bill Pace	1967-72	5-27-1	—	22-38-3	—
Steve Sloan	1973-74	3-8-1	—	12-9-1	—
Fred Pancoast	1975-78	2-22-0	—	13-31-0	—
George MacIntyre	1979-85	8-33-1	—	25-52-1	—
Watson Brown	1986-90	4-29-0	—	10-45-0	—
Gerry DiNardo	1991-94	#9-22-0	—	19-25-0	—
Rod Dowhower	1995-96	1-15-0	—	4-18-0	—
Woody Widenhofer	1997-2001	4-36	—	15-40	—
Bobby Johnson	2002-	12-54	—	29-66	—
Robbie Caldwell	2010	1-7	—	2-10	—
James Franklin	2011-2013	11-13	—	24-15	—
Derek Mason	2014-20	10-46	—	27-55	—
^Todd Fitch	2020	0-1	—	0-1	—
Clark Lea	2021	2-14	—	7-17	—

- Indicates game forfeited to Vanderbilt

^ - Interim head coach for final game of 2020 season

SEC COACH OF THE YEAR

NATIONAL COACH OF THE YEAR

1942	Bill Alexander, Georgia Tech (AFCA)
1956	Bowden Wyatt, Tennessee (AFCA)
1958	Paul Dietzel, LSU (AFCA, FWA)
1961	Paul "Bear" Bryant, Alabama (AFCA)
1970	Charlie McClendon, LSU (AFCA)
1971	Paul "Bear" Bryant, Alabama (AFCA)
1973	Paul "Bear" Bryant, Alabama (AFCA)
1976	Vince Dooley, Georgia (Dodds)
1980	Vince Dooley, Georgia (AFCA, FWA, WC)
1982	Jerry Stovall, LSU (WC); George MacIntyre, Vanderbilt (Dodds)
1989	Bill Curry, Alabama (Dodds)
1992	Gene Stallings, Alabama (AFCA, FWA, WC)
1993	Terry Bowden, Auburn (AFCA, FWA, WC)
1998	Phillip Fulmer, Tennessee (FWA)
2003	Nick Saban, LSU (FWA, AP)
2004	Tommy Tuberville, Auburn (CWC, AP)
2011	Les Miles, LSU (Liberty, Home Depot, AP)
2013	Gus Malzahn, Auburn (AP, Liberty, Eddie Robinson, Home Depot)
2014	Nick Saban, Alabama (Dodds)
2018	Nick Saban, Alabama (Camp)
2019	Ed Orgeron (AFCA, FWA, WC, AP)

AFCA American Football Coaches Association
FWA Football Writers of America
WC Walter Camp

AP SEC COACH OF THE YEAR

1946	Wally Butts, Georgia
1947	John Vaught, Ole Miss
1948	John Vaught, Ole Miss
1949	Gaynell Tinsley, LSU
1950	Paul Bryant, Kentucky
1951	Bob Neyland, Tennessee
1952	Bobby Dodd, Georgia Tech
1953	Ralph Jordan, Auburn
1954	John Vaught, Ole Miss
1955	John Vaught, Ole Miss
1956	Bowden Wyatt, Tennessee
1957	Ralph Jordan, Auburn
1958	Paul Dietzel, LSU
1959	Paul Bryant, Alabama
1960	John Vaught, Ole Miss
1961	Paul Bryant, Alabama
1962	John Vaught, Ole Miss
1963	Paul Davis, Miss. State
1964	Paul Bryant, Alabama
1965	Paul Bryant, Alabama
1966	Vince Dooley, Georgia
1967	Doug Dickey, Tennessee
1968	Vince Dooley, Georgia
1969	Charlie McClendon, LSU
1970	Charlie Shira, Miss. State
1971	Paul Bryant, Alabama
1972	Ralph Jordan, Auburn
1973	Paul Bryant, Alabama
1974	Steve Sloan, Vanderbilt
1975	Ken Cooper, Ole Miss
1976	Vince Dooley, Georgia
1977	Fran Curci, Kentucky
1978	Paul Bryant, Alabama
1979	Paul Bryant, Alabama
1980	Vince Dooley, Georgia
1981	Paul Bryant, Alabama
1982	Jerry Stovall, LSU
1983	Billy Brewer, Ole Miss
1984	Jerry Claiborne, Kentucky
1985	Galen Hall, Florida
1986	Johnny Majors, Tennessee
1987	Bill Arnsparger, LSU
1988	Pat Dye, Auburn
1989	Pat Dye, Auburn
1990	Bill Curry, Alabama
1991	Steve Spurrier, Florida
1992	Gerry DiNardo, Vanderbilt
1993	Gene Stallings, Alabama
1994	Terry Bowden, Auburn
1995	Gene Stallings, Alabama
1996	Steve Spurrier, Florida
1997	Steve Spurrier, Florida
1998	Tommy Tuberville, Ole Miss
1999	Phillip Fulmer, Tennessee
2000	Mike DuBose, Alabama
2001	Lou Holtz, South Carolina
2002	Houston Nutt, Arkansas
2003	Mark Richt, Georgia
2004	David Cutcliffe, Ole Miss; Nick Saban, LSU
2005	Tommy Tuberville, Auburn
2006	Steve Spurrier, South Carolina
2007	Houston Nutt, Arkansas
2008	Sylvester Croom, Mississippi State
2009	Nick Saban, Alabama
2010	Nick Saban, Alabama
2011	Nick Saban, Alabama
2012	Nick Saban, Alabama
2013	Nick Saban, Alabama
2014	Nick Saban, Alabama
2015	Nick Saban, Alabama
2016	Nick Saban, Alabama
2017	Nick Saban, Alabama
2018	Nick Saban, Alabama
2019	Nick Saban, Alabama
2020	Nick Saban, Alabama
2021	Nick Saban, Alabama
2022	Nick Saban, Alabama

2010	Gene Chizik, Auburn
2011	Les Miles, LSU
2012	Kevin Sumlin, Texas A&M
2013	Gus Malzahn, Auburn
2014	Dan Mullen, Mississippi State
2015	Jim McElwain, Florida
2016	Nick Saban, Alabama
2017	Kirby Smart, Georgia
2018	Mark Stoops, Kentucky
2019	Ed Orgeron, LSU
2020	Nick Saban, Alabama
2021	Kirby Smart, Georgia
2022	Josh Heupel, Tennessee

UPI SEC COACH OF THE YEAR

1960	John Vaught, Ole Miss
1961	Paul Bryant, Alabama
1962	John Vaught, Ole Miss
1963	Ralph Jordan, Auburn
1964	Paul Bryant, Alabama
1965	Paul Bryant, Alabama
1966	Vince Dooley, Georgia
1967	Doug Dickey, Tennessee
1968	Vince Dooley, Georgia
1969	Charlie McClendon, LSU
1970	Charlie McClendon, LSU
1971	Paul Bryant, Alabama
1972	Ralph Jordan, Auburn
1973	Paul Bryant, Alabama
1974	Paul Bryant, Alabama
1975	Ken Cooper, Ole Miss
1976	Vince Dooley, Georgia
1977	Paul Bryant, Alabama
1978	Paul Bryant, Alabama
1979	Paul Bryant, Alabama
1980	Charley Pell, Florida
1981	Paul Bryant, Alabama
1982	George MacIntyre, Vanderbilt
1983	Pat Dye, Auburn
1984	Galen Hall, Florida
1985	Johnny Majors, Tennessee
1986	Billy Brewer, Ole Miss
1987	Bill Curry, Alabama
1988	Pat Dye, Auburn
1989	Bill Curry, Alabama
1990	Steve Spurrier, Florida

NOTE: Discontinued following 1990 season

SEC COACH OF THE YEAR

(as voted by the league's coaches)

1935	Jack Meagher, Auburn
1936	Bob Neyland, Tennessee
1937	Ray Morrison, Vanderbilt
1938	Bob Neyland, Tennessee
1939	Bill Alexander, Georgia Tech
1940	Allyn McKeen, Miss. State
1941	Red Sanders, Vanderbilt
1942	Wally Butts, Georgia
1943	No Selection Made
1944	John Barnhill, Tennessee
1945	Frank Thomas, Alabama
1946	Wally Butts, Georgia
1947	John Vaught, Ole Miss
1948	Henry Frnka, Tulane
1949	Gaynell Tinsley, LSU
1950	Bob Neyland, Tennessee
1951	Bobby Dodd, Georgia Tech
1952	Harold Drew, Alabama
1953	Ralph Jordan, Auburn
1954	Blanton Collier, Kentucky
1955	Art Guepe, Vanderbilt
1956	Bowden Wyatt, Tennessee
1957	Wade Walker, Miss. State
1958	Paul Dietzel, LSU
1959	Wally Butts, Georgia
1960	Ray Graves, Florida
1961	Paul Bryant, Alabama
1962	John Vaught, Ole Miss
1963	Ralph Jordan, Auburn
1964	Paul Bryant, Alabama
1965	Doug Dickey, Tennessee
1966	Vince Dooley, Georgia
1967	Doug Dickey, Tennessee
1968	Vince Dooley, Georgia
1969	Charlie McClendon, LSU
1970	Charlie McClendon, LSU
1971	Paul Bryant, Alabama
1972	Ralph Jordan, Auburn
1973	Paul Bryant, Alabama
1974	Paul Bryant, Alabama
1975	Ken Cooper, Ole Miss
1976	Vince Dooley, Georgia
1977	Paul Bryant, Alabama
1978	Vince Dooley, Georgia

1979	Paul Bryant, Alabama
1980	Vince Dooley, Georgia
1981	Paul Bryant, Alabama
1982	George MacIntyre, Vanderbilt
1983	Pat Dye, Auburn
1984	Bill Arnsparger, LSU
1985	Johnny Majors, Tennessee
1986	Bill Arnsparger, LSU
1987	Pat Dye, Auburn
1988	Pat Dye, Auburn
1989	Bill Curry, Alabama
1990	Billy Brewer, Ole Miss
1991	Steve Spurrier, Florida
1992	Gene Stallings, Alabama
1993	Terry Bowden, Auburn
1994	Steve Spurrier, Florida
1995	Steve Spurrier, Florida
1996	Steve Spurrier, Florida
1997	Jim Donnan, Georgia
1998	Phillip Fulmer, Tennessee
1999	Mike DuBose, Alabama
2000	Lou Holtz, South Carolina
2001	Houston Nutt, Arkansas
2002	Mark Richt, Georgia
2003	David Cutcliffe, Ole Miss
2004	Tommy Tuberville, Auburn
2005	Mark Richt, Georgia
2006	Houston Nutt, Arkansas
2007	Sylvester Croom, Mississippi State
2008	Houston Nutt, Ole Miss
	Nick Saban, Alabama
	Bobby Johnson, Vanderbilt
2009	Nick Saban, Alabama
2010	Steve Spurrier, South Carolina
2011	Les Miles, LSU
2012	Kevin Sumlin, Texas A&M
	Will Muschamp, Florida
2013	Gus Malzahn, Auburn
2014	Gary Pinkel, Missouri
2015	Jim McElwain, Florida
2016	Nick Saban, Alabama
2017	Kirby Smart, Georgia
2018	Mark Stoops, Kentucky
2019	Ed Orgeron, LSU
2020	Nick Saban, Alabama
2021	Kirby Smart, Georgia
2022	Kirby Smart, Georgia

NOTE: From 1935-97, voting coordinated by the Nashville Banner newspaper.

SEC CHAMPIONSHIP COACHES

Paul "Bear" Bryant (14) – Kentucky (1) 1950; Alabama (13) 1961-64-65-66-71-72-73-74-75-77-78-79-81
Nick Saban (10) – LSU 2001-03; Alabama 2009-12-14-15-16-18-20-21
Johnny Vaught (6) – Ole Miss 1947-54-55-60-62-63
Vince Dooley (6) – Georgia 1966-68-76-80-81-82
Steve Spurrier (6) – Florida 1991-93-94-95-96-2000
Bob Neyland (5) – Tennessee 1938-39-40-46-51
Frank Thomas (4) – Alabama 1933-34-37-45
Wally Butts (4) – Georgia 1942-46-48-59
Pat Dye (4) – Auburn 1983-87-88-89
Bill Alexander (3) – Georgia Tech 1939-43-44
Johnny Majors (3) – Tennessee 1985-89-90
Bernie Moore (2) – LSU 1935-36
Paul Dietzel (2) – LSU 1958-61
Doug Dickey (2) – Tennessee 1967-69
Bobby Dodd (2) – Georgia Tech 1951-52
Phillip Fulmer (2) – Tennessee 1997-98
Urban Meyer (2) – Florida, 2006-08
Les Miles (2) – LSU 2007-11
Mark Richt (2) – Georgia 2002-05
Kirby Smart (2) – Georgia 2017-22
Ted Cox (1) – Tulane 1934
Red Dawson (1) – Tulane 1939
Allyn McKeen (1) – Mississippi State 1941
Henry Frnka (1) – Tulane 1949
Red Drew (1) – Alabama 1953
Bowden Wyatt (1) – Tennessee 1956
Ralph Jordan (1) – Auburn 1957
Charlie McClendon (1) – LSU 1970
Fran Curci (1) – Kentucky 1976
Bill Arnsparger (1) – LSU 1986
Mike Archer (1) – LSU 1988
Bill Curry (1) – Alabama 1989
Gene Stallings (1) – Alabama 1992
Mike DuBose (1) – Alabama 1999
Tommy Tuberville (1) – Auburn 2004
Gene Chizik (1) – Auburn 2010
Gus Malzahn (1) – Auburn 2013
Ed Orgeron (1) – LSU 2019

NOTE: Includes ties



COACHES

WINNINGEST SEC COACHES

ALL GAMES AT SEC INSTITUTIONS

(By Victories)

Wins	Coach (Schools)	Seasons	W-L-T
1. 292	Paul "Bear" Bryant (Kentucky/Alabama)	UK 1946-53 UA 1958-82	60-23-5 232-46-9
2. 237	Nick Saban (LSU/Alabama)	LS 2000-04 UA 2007-present	48-16 189-27
3. 208	Steve Spurrier (Florida/South Carolina)	UF 1990-2001 SC 2005-2015	122-27-1 86-49
4. 201	Vince Dooley (Georgia)	1964-88	201-77-10
5. 197	Dan McGugin (Vanderbilt)	1904-17; 1919-34	197-55-19
6. 190	John Vaught (Ole Miss)	1947-70; 1973	190-61-12
7. 176	Ralph "Shug" Jordan (Auburn)	1951-75	176-83-6
8. 173	Robert Neyland (Tennessee)	1926-34; 1936-40; 1946-52	173-31-12
9. 152	Phillip Fulmer (Tennessee)	1992-2008	152-52
10. 145	Mark Richt (Georgia)	2001-2015	145-51
11. 140	Wallace Butts (Georgia)	1939-60	140-86-9
12. 137	Charlie McClendon (LSU)	1962-79	137-59-7
13. 122	Mike Donahue (Auburn/LSU)	AU 1904-06; 1908-22 LSU 1923-27	99-35-5 23-19-3
14. 115	Johnny Majors (Tennessee)	1977-92	115-62-8
11. 115	Frank Thomas (Alabama)	1931-46	115-24-7
16. 114	Les Miles (LSU)	2005-16	114-34
17. 110	Tommy Tuberville (Ole Miss/Auburn)	UM 1995-98 AU 1999-2008	25-20 85-40
18. 104	Doug Dickey (Tennessee/Florida)	UT 1964-69 UF 1970-78	46-15-4 58-42-2
19. 103	Dan Mullen (Mississippi State/Florida)	MS 2009-17 UF 2018-21	69-46 34-15
20. 99	Pat Dye (Auburn)	1981-92	99-39-4
99	Houston Nutt (Ole Miss/Arkansas)	AR 1998-2007 UM 2008-2011	75-48 24-26
22. 98	Harry Mehre (Georgia/Ole Miss)	UG 1928-37 UM 1938-45	59-34-6 39-26-1
23. 83	Bernie Moore (LSU)	1935-47	83-39-6
24. 81	Kirby Smart (Georgia)	2016-present	81-15
25. 75	Jackie Sherrill (Mississippi State)	1991-2002	75-75-2

Minimum 50 Victories

(By Percentage)

Pct	Coach (Schools)	Seasons	W-L-T
1. .846	Nick Saban (Alabama/LSU)	LSU 2000-04 UA 2007-present	48-16 189-27
2. .844	Kirby Smart (Georgia)	2016-present	81-15
3. .829	Robert Neyland (Tennessee)	1926-34; 1936-40; 1946-52	173-31-12
4. .8125	Urban Meyer (Florida)	2005-10	65-15
5. .8117	Wallace Wade (Alabama)	1923-30	61-13-3
6. .8116	Frank Thomas (Alabama)	1931-46	115-24-7
7. .797	Paul "Bear" Bryant (Kentucky/Alabama)	UK 1946-53 UA 1958-82	60-23-5 232-46-9
8. .770	Les Miles (LSU)	2005-16	114-34
9. .7644	Allyn McKeen (Mississippi State)	1939-48	65-19-3
10. .7639	G.E. Pyle (Florida)	1909-13	26-7-3
11. .762	Dan McGugin (Vanderbilt)	1904-17; 1919-34	197-55-19
12. .748	John Vaught (Ole Miss)	1947-70; 1973	190-61-12
13. .745	Phillip Fulmer (Tennessee)	1992-2008	152-52
14. .740	Mark Richt (Georgia)	2001-2015	145-51
15. .732	Steve Spurrier (Florida/South Carolina)	UF 1990-2001 USC 2005-2015	122-27-1 86-49
16. .731	Terry Bowden (Auburn)	1993-98	47-17-1
17. .722	John Heisman (Auburn)	1895-99	12-4-2
18. .718	Bill Battle (Tennessee)	1970-76	59-22-4
19. .715	Vince Dooley (Georgia)	1964-88	201-77-10
20. .713	Gene Stallings (Alabama)	1990-96	62-25-0
21. .711	Pat Dye (Auburn)	1981-92	99-39-4
22. .698	W.D. Chadwick (Mississippi State)	1909-13	29-12-2
23. .694	Galen Hall (Florida)	1984-88	37-16-1
24. .692	Charlie McClendon (LSU)	1962-79	137-59-7
25. .686	Ray Graves (Florida)	1960-69	70-31-4
26. .685	Mike Donahue (Auburn/LSU)	AU 1904-06; 1908-22 LSU 1923-27	99-35-5 23-19-3
27. .679	W.A. Cunningham (Georgia)	1910-19	43-18-9
28. .675	Ralph "Shug" Jordan (Auburn)	1951-75	176-83-6
29. .672	Bernie Moore (LSU)	1935-47	83-39-6
30. .660	Gus Malzahn (Auburn)	2013-20	68-35
.660	Paul Dietzel (LSU)	1955-61	46-23-3
32. .649	George Woodruff (Georgia)	1923-27	30-16-1
33. .647	Tommy Tuberville (Ole Miss/Auburn)	UM 1995-98 AU 1999-2008	25-20 85-40
34. .643	Johnny Majors (Tennessee)	1977-92	115-62-8
35. .641	Doug Dickey (Tennessee/Florida)	UT 1964-69 UF 1970-78	46-15-4 58-42-2
36. .633	M.B. Banks (Tennessee)	1921-25	27-15-3
37. .628	Z.G. Clevenger (Tennessee)	1911-15	26-15-2
.628	Dan Mullen (Mississippi State/Florida)	MSU 2009-17 UF 2018-21	69-46 34-15
39. .622	Bowden Wyatt (Tennessee)	1955-62	49-29-4
40. .617	H.R. "Red" Sanders (Vanderbilt)	1940-42; 1946-48	36-22-2

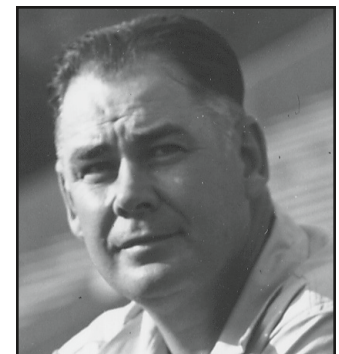
Minimum Five Years And .600 Winning Percentage; Active Coaches in Boldface



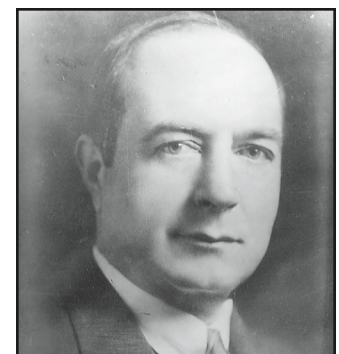
PAUL "BEAR" BRYANT
KENTUCKY/ALABAMA



WALLACE BUTTS
GEORGIA



ROBERT NEYLAND
TENNESSEE



DAN MCGUGIN
VANDERBILT

WINNINGEST SEC COACHES

SEC REGULAR-SEASON GAMES

(By Victories)

Wins	Coach (Schools)	Seasons	W-L-T
1.	159 Paul "Bear" Bryant (Kentucky/Alabama)	UK 1946-53 UA 1958-82	22-18-4 137-28-5
2.	147 Nick Saban (Alabama/LSU)	LS 2000-04 UA 2007-present	30-12 117-19
3.	131 Steve Spurrier (Florida/South Carolina)	UF 1990-2001 SC 2005-2015	87-14 44-40
4.	106 John Vaught (Ole Miss)	1947-70; 1973	106-41-10
5.	105 Vince Dooley (Georgia)	1964-88	105-41-4
6.	98 Ralph "Shug" Jordan (Auburn)	1951-75	98-63-4
8.	85 Mark Richt (Georgia)	1992-2008	98-36
9.	67 Wallace Butts (Georgia)	2001-2015	85-40
10.	64 Tommy Tuberville (Ole Miss/Auburn)	1939-60 UM 1995-98 AU 1999-2008	67-60-5 12-20 52-29
12.	64 Les Miles (LSU)	2005-2016	64-30
62	Charlie McClendon (LSU)	1962-79	62-38-0
62	Robert Neyland (Tennessee)	1926-34; 1936-40; 1946-52	62-15-5
14.	59 Frank Thomas (Alabama)	1931-46	59-16-6
15.	57 Johnny Majors (Tennessee)	1977-92	57-40-3
16.	54 Dan Mullen (Mississippi State/Florida)	MS 2009-17 UF 2018-21	33-39 21-14
17.	52 Houston Nutt (Ole Miss/Arkansas)	AR 1998-2007 UM 2008-2011	42-38 10-24
18.	50 Kirby Smart (Georgia)	UG 2016-present	50-12
19.	49 Doug Dickey (Tennessee/Florida)	UT 1964-69 UF 1970-78	21-10-4 28-28-1
20.	48 Pat Dye (Auburn)	1981-92	48-27-1
21.	43 Jackie Sherrill (Mississippi State)	1991-2003	43-52-1
22.	40 Gus Malzahn (Auburn)	AU 2013-20	40-28
23.	39 Urban Meyer (Florida)	2005-10	39-13
24.	38 Gene Stallings (Alabama)	1990-96	38-16-0
25.	36 Ray Graves (Florida)	1960-69	36-19-3

Minimum 25 Victories /Includes SEC Championship Games

(By Percentage)

Pct	Coach (Schools)	Seasons	W-L-T
1.	.826 Nick Saban (Alabama/LSU)	LSU 2000-04 UA 2007-present	30-12 117-19
2.	.806 Kirby Smart (Georgia)	2016-present	50-12
3.	.787 Robert Neyland (Tennessee)	1926-34; 1936-40; 1946-52	62-15-5
4.	.765 Frank Thomas (Alabama)	1931-46	59-16-6
5.	.764 Paul "Bear" Bryant (Kentucky/Alabama)	UK 1946-53 UA 1958-82	22-18-4 137-28-5
6.	.750 Urban Meyer (Florida)	2005-10	39-13
7.	.731 Phillip Fulmer (Tennessee)	1992-2008	98-36
8.	.713 Vince Dooley (Georgia)	1964-88	105-41-4
9.	.708 Steve Spurrier (Florida/South Carolina)	UF 1990-2001 USC 2005-2015	87-14 44-40
10.	.707 John Vaught (Ole Miss)	1947-70; 1973	106-41-10
11.	.704 Gene Stallings (Alabama)	1990-96	38-16-0
12.	.681 Les Miles (LSU)	2005-2016	64-30
13.	.680 Mark Richt (Georgia)	2001-2015	85-40
14.	.678 Terry Bowden (Auburn)	1993-98	30-14-1
15.	.647 Ray Graves (Florida)	1960-69	36-19-3
16.	.6383 Allyn McKeen (Mississippi State)	1939-48	29-16-2
17.	.6382 Pat Dye (Auburn)	1981-92	48-27-1
18.	.632 Galen Hall (Florida)	1984-88	24-14-0
19.	.625 Jim Donnan (Georgia)	1996-2000	25-15-0
20.	.620 Charlie McClendon (LSU)	1962-79	62-38-0
21.	.614 Paul Dietzel (LSU)	1955-61	26-16-2
22.	.606 Ralph "Shug" Jordan (Auburn)	1951-75	98-63-4
23.	.588 Gus Malzahn (Auburn)	2013-20	40-28
24.	.585 Johnny Majors (Tennessee)	1977-92	57-40-3
25.	.566 Tommy Tuberville (Ole Miss/Auburn)	UM 1995-98 AU 1999-2008	12-20 52-29
26.	.560 Doug Dickey (Tennessee/Florida)	UT 1964-69 UF 1970-78	21-10-4 28-28-1
27.	.554 Bowden Wyatt (Tennessee)	1955-62	29-23-4
28.	.551 Harold "Red" Drew (Ole Miss/Alabama)	UM 1946 UA 1947-54	1-6-0 33-21-7
29.	.549 Bill Battle (Tennessee)	1970-76	22-18-1
30.	.527 Wallace Butts (Georgia)	1939-60	67-60-5
31.	.521 David Cutcliffe (Ole Miss)	1998-2004	25-23
32.	.517 Doug Barfield (Auburn)	1976-80	15-14-1
33.	.509 Jack Meagher (Auburn)	1934-42	26-25-7

Minimum Five Years And .500 Winning Percentage/Includes SEC Championship Games
Active Coaches in Boldface



VINCE DOOLEY
GEORGIA



JOHN VAUGHT
OLE MISS



RALPH "SHUG" JORDAN
AUBURN



CHARLIE MCCLENDON
LSU