



POWER RANKINGS

IN THEORY, EVERY TEAM IS ON THE ROAD TO THE FINAL FOUR. TRUTH IS, MOST OF THEM ARE HEADING FOR A DEAD END. SO TO HELP YOU NAVIGATE THIS YEAR'S FIELD, *THE MAG* AND ESPN.COM MAPPED OUT THIS TOP 25.



COLLEGE HOOPS TIP-OFF
11.14.11

The Heels have a jump on the field thanks to Henson and the UNC frontcourt.

Team capsules by Jordan Brenner



NORTH CAROLINA

Last season: 29-8 (14-2 ACC) Elite Eight

Go ahead, try to find a weakness. It's not in the frontcourt of senior PF Tyler Zeller (15.7 ppg), junior PF John Henson (11.7) and sophomore SF Harrison Barnes

(15.7). Soph Kendall Marshall (6.2 apg) is the perfect point to keep those scorers well fed. And in case that experience isn't enough, SG P.J. Hairston (No. 13, ESPNU 100) and PF James McAdoo (No. 6) are instant impact players. Found a weakness yet? Didn't think so.

CHAD FORD'S FUTURE PRO

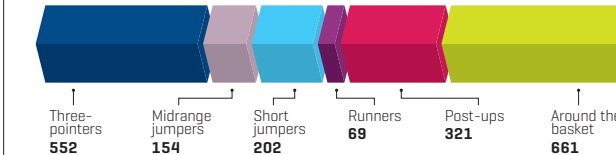
SF HARRISON BARNES
SOPHOMORE, 6'8", 215
TOP 100 DRAFT BOARD
RANK: 2

Of four possible UNC lottery picks, Barnes is the alpha dog. His ability to score from anywhere makes him a favorite of scouts, and his willingness to carry the team in the clutch puts him in the mix for the No. 1 pick.

* For the latest Top 100 NBA prospects, SEARCH: CHAD FORD at ESPN.COM on Tuesdays leading up to June's draft.

SHOT BREAKDOWN*

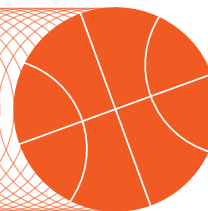
1,959 field goal attempts



* Shot breakdown of 2010-11 season (halfcourt only) provided by Synergy Sports Technology; midrange jumpers measure 17' to 20'9".

JOE LUNARDI'S GAMES WITH BRACKET IMPACT

Nov. 11 vs. Michigan State
Dec. 3 @ Kentucky
March 3 @ Duke



2

KENTUCKY

Last season: 29-9 (10-6 SEC) Final Four

Another year, another obscene recruiting class for John Calipari: F/C Anthony Davis (No. 1, ESPNU 100), SF Michael Kidd-Gilchrist (No. 4) and PG Marquis Teague (No. 8). Add two returnees from the 2010 crop—Terrence Jones (15.7 ppg) and Doron Lamb (12.3 ppg)—and there's talk of this being Calipari's most talented starting five ever. Senior **Darius Miller** (10.9 ppg, 4.6 rpg, 44.3 3PT%) might as well be an assistant coach to these kids.

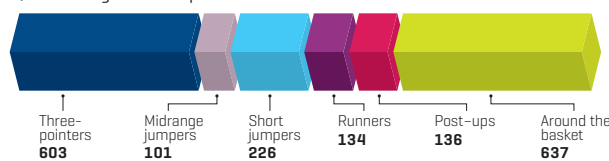
CHAD FORD'S FUTURE PRO

F/C ANTHONY DAVIS
FRESHMAN, 6'10", 220
TOP 100 DRAFT BOARD
RANK: 1

Kentucky has four potential lottery picks, but Davis is the Holy Grail—tall, huge wingspan, runs like a guard and plays hard. He needs bulk and polished post moves, but he's still favored to go No. 1.

SHOT BREAKDOWN

1,837 field goal attempts



JOE LUNARDI'S GAMES WITH BRACKET IMPACT

Dec. 3 vs. North Carolina | Dec. 31 vs. Louisville | Feb. 11 @ Vanderbilt



3

OHIO STATE

Last season: 34-3 (16-2 Big Ten) Sweet 16

With four of its top six players back, Ohio State should again have D1's most efficient offense, especially with POY favorite **Jared Sullinger** (17.2 ppg, 10.2 rpg) in the paint. But neither soph Aaron Craft nor four-star frosh Shannon Scott has much of a stroke at the point, and lights-out Jon Diebler (50.2 3PT%) is gone. Still, Thad Matta nearly won it all a few years ago with a guard who couldn't shoot (Mike Conley) and a dominant big man (Greg Oden).

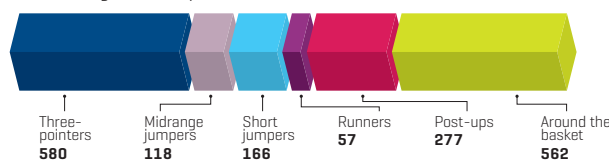
CHAD FORD'S FUTURE PRO

PF JARED SULLINGER
SOPHOMORE, 6'9", 280
TOP 100 DRAFT BOARD
RANK: 7

With a body the size of a semi, Sullinger is a true big man who is also blessed with basketball smarts. If he were two or three inches taller (and 10 to 15 pounds lighter), he'd be a shoo-in for the No. 1 pick.

SHOT BREAKDOWN

1,760 field goal attempts



JOE LUNARDI'S GAMES WITH BRACKET IMPACT

Nov. 15 vs. Florida | Nov. 29 vs. Duke | Feb. 4 @ Wisconsin



4

CONNECTICUT

Last season: 32-9 (9-9 Big East) Champions

Surprise! Just when a repeat looked like a pipe dream, Andre Drummond (No. 2, ESPNU 100) decided to come to college a year early. Suddenly, the Huskies have a huge anchor inside, but someone has to get the ball to him and sophomore star-in-the-making **Jeremy Lamb** (11.1 ppg). If soph Shabazz Napier can come close to resembling departed do-it-all PG Kemba Walker, there might be one more surprise in store for UConn.

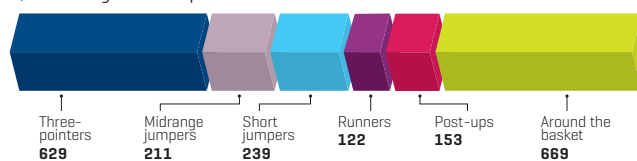
CHAD FORD'S FUTURE PRO

F/C ANDRE DRUMMOND
FRESHMAN, 6'10", 270
TOP 100 DRAFT BOARD
RANK: 3

Drummond has an NBA body right now. He defends, rebounds and blocks shots; he can face the basket, take his man off the dribble and post up. In other words, a serious contender to be the No. 1 pick.

SHOT BREAKDOWN

2,023 field goal attempts



JOE LUNARDI'S GAMES WITH BRACKET IMPACT

Feb. 6 @ Louisville | Feb. 18 vs. Marquette | Feb. 25 vs. Syracuse



5

SYRACUSE

Last season: 27-8 (12-6 Big East) 3rd Round

The Orange struggled to defend and board last season, resulting in an early Tourney exit. But Jim Boeheim has answers. Frosh Rakeem Christmas (No. 20, ESPNU 100) and seven-foot soph Fab Melo will crash the glass and focus on D. That frees seniors **Scoop Jardine** (12.5 ppg, 5.9 apg) and Kris Joseph (14.3 ppg) and junior Brandon Triche (11.1 ppg) to lead an offensive charge made all the more deadly by a new facet: second-chance points.

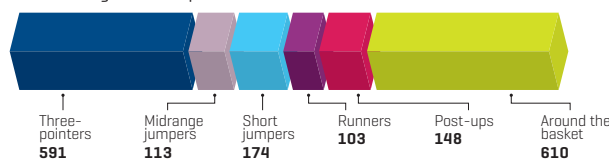
CHAD FORD'S FUTURE PRO

F/C RAKEEM CHRISTMAS
FRESHMAN, 6'9", 222
TOP 100 DRAFT BOARD
RANK: 62

At 22, Joseph isn't a sexy prospect. Enter Christmas. Scouts want players with size and athleticism who rebound, block shots and play D. He's got it all covered, which should get him into the NBA before long.

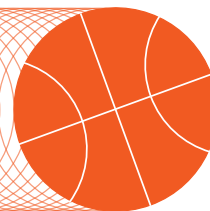
SHOT BREAKDOWN

1,739 field goal attempts



JOE LUNARDI'S GAMES WITH BRACKET IMPACT

Dec. 2 vs. Florida | Feb. 11 vs. UConn | March 3 vs. Louisville



6

DUKE

Last season: 32-5 (13-3 ACC) Sweet 16

Three is the key in Durham. Coach K is three wins shy of breaking the D1 record (902), and with a 12-deep squad, he won't have to worry about his magic number for long. Meanwhile, Duke's top three guards, including frosh **Austin Rivers** (No. 3, ESPNU 100), can all rain threes. But the Blue Devils don't have a true point guard, and that's a concern for the three veteran bigs—Mason and Miles Plumlee and Ryan Kelly—who are best served off the dish.

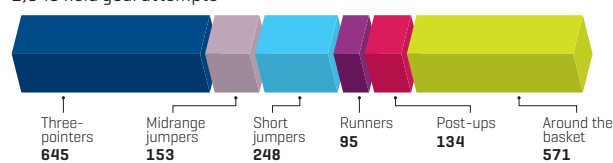
CHAD FORD'S FUTURE PRO

PG/SG AUSTIN RIVERS
FRESHMAN, 6'4", 200
TOP 100 DRAFT BOARD RANK: 11

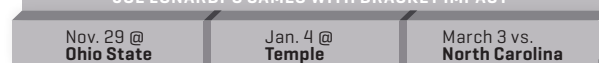
Austin's dad, Doc, passed down his basketball IQ, scoring instincts and ability to wow. But Austin isn't as athletic as his dad, which limits his ceiling as a pro unless he can show consistency as a point guard.

SHOT BREAKDOWN

1,846 field goal attempts



JOE LUNARDI'S GAMES WITH BRACKET IMPACT



7

VANDERBILT

Last season: 23-11 (9-7 SEC) 2nd Round

After being bounced early from the Tourney as a No. 5 seed, Vandy is dreaming bigger than ever—and for good reason. Its top eight players return, including leading scorer **John Jenkins** (19.5 ppg), a junior guard. Plus, SG Dai-Jon Parker (No. 33, ESPNU 100) has hopped aboard. But if the Dores don't shore up a D that allowed opponents to sink a ridiculous 43.4% from deep in their final six games, their dreams will be dashed again.

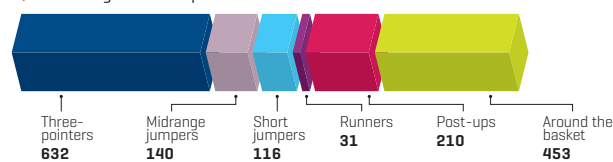
CHAD FORD'S FUTURE PRO

SF JEFFERY TAYLOR
SENIOR, 6'7", 225
TOP 100 DRAFT BOARD RANK: 29

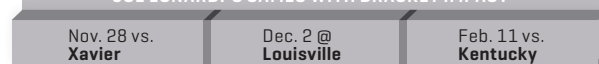
Taylor is an explosive leaper and a prime defender, but he struggles to dominate on offense. Scouts are interested in him for his physical skills, but don't be shocked if center Festus Ezeli goes first.

SHOT BREAKDOWN

1,582 field goal attempts



JOE LUNARDI'S GAMES WITH BRACKET IMPACT



8

FLORIDA

Last season: 29-8 (13-3 SEC) Elite Eight

If only the Tourney had a height limit, because the Gators backcourt of junior **Kenny Boynton** (6'2"), senior Erving Walker (5'8"), superfrosh Bradley Beal (6'3") and transfer Mike Rosario (6'3") would dominate. Alas, it does not, so Florida's hopes for a Final Four hinge on soph Patric Young (3.4 ppg) and junior Erik Murphy (4.3 ppg) stepping into the big-man void left by NBA second-rounders Vernon Macklin and Chandler Parsons.

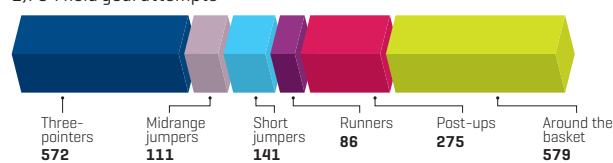
CHAD FORD'S FUTURE PRO

SG BRADLEY BEAL
FRESHMAN, 6'3", 207
TOP 100 DRAFT BOARD RANK: 4

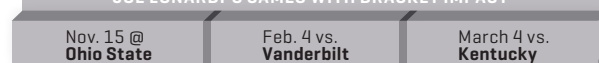
Scouts not only compare Beal to Ray Allen and Eric Gordon, they believe he's further along than either pro at this stage. If Billy Donovan lets his freshman go wild, Beal could be a high lottery pick in 2012.

SHOT BREAKDOWN

1,764 field goal attempts



JOE LUNARDI'S GAMES WITH BRACKET IMPACT



9

MEMPHIS

Last season: 25-10 (10-6 C-USA) 2nd Round

Tigers fans have reason to smile: SG Will Barton (12.3 ppg) stayed in school, PG Joe Jackson excelled with the U19 team, PF **Tarik Black** shone after New Year's (10.6 ppg, 5.3 rpg) and top-10 frosh Adonis Thomas is ready-made. But Memphis went 14-2 in games decided by five or fewer points and in OT. That speaks to poise—and luck. If the Tigers test the buzzer that often this season, their luck may run out.

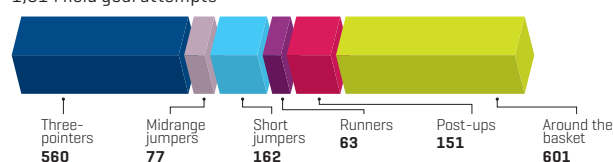
CHAD FORD'S FUTURE PRO

SF ADONIS THOMAS
FRESHMAN, 6'6", 222
TOP 100 DRAFT BOARD RANK: 18

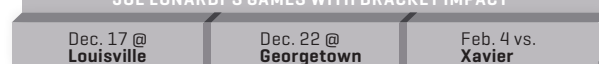
The NBA loves crazy athletes, and Thomas is insane. He has pro-caliber ability to run the floor, explode to the rim and finish. If he can transition smoothly from a 4 to a 3, he'll move up draft boards.

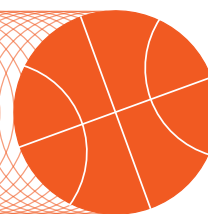
SHOT BREAKDOWN

1,614 field goal attempts



JOE LUNARDI'S GAMES WITH BRACKET IMPACT





10

LOUISVILLE

Last season: 25-10 (12-6 Big East) 2nd Round

Rick Pitino loves **Peyton Siva's** savvy, clutch heroics and leadership. Especially his leadership. The junior point guard's steady hand will be crucial in helping his team move on from its tough Tourney loss to Morehead State. Siva will need to integrate top-30 frosh Chane Behanan and 6'11" soph Gorgui Dieng while feeding his wings, including top recruit Wayne Blackshear (No. 27, ESPN 100). Yes, that's a lot of Cards to shuffle. But too many? Not for this dealer.

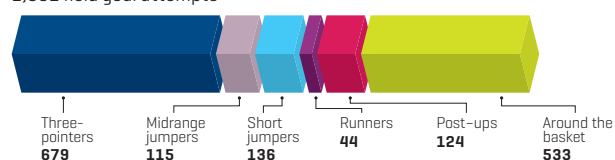
CHAD FORD'S FUTURE PRO

SG WAYNE BLACKSHEAR
FRESHMAN, 6'5", 225
TOP 100 DRAFT BOARD
RANK: 53

Few freshmen look more NBA-ready than Blackshear. A power athlete who knows how to get to the basket and finish, he just needs more of his jumpers to fall to rise up draft boards.

SHOT BREAKDOWN

1,631 field goal attempts



JOE LUNARDI'S GAMES WITH BRACKET IMPACT

Dec. 2 vs. **Vanderbilt** Dec. 31 @ **Kentucky** Feb. 6 vs. **UConn**



11

PITTSBURGH

Last season: 28-6 (15-3 Big East) 3rd Round

For all his success at Pittsburgh, coach Jamie Dixon never has landed a signature, top-15 recruit. Well, until now. Introducing PF Khem Birch (No. 12, ESPN 100), the highest-rated Panthers prospect since Brian Shorter in 1987, 16 years before Dixon took over. Nine letter winners also return, including the team's leading scorer, senior SG **Ashton Gibbs** (16.8 ppg). That could add up to another first for Dixon: a Final Four appearance.

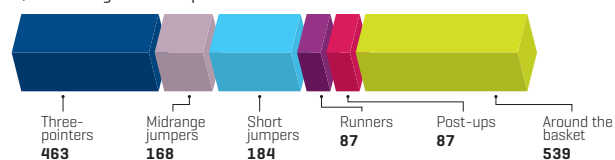
CHAD FORD'S FUTURE PRO

PF KHEM BIRCH
FRESHMAN, 6'9", 220
TOP 100 DRAFT BOARD
RANK: 55

Birch is a shot-blocking, rebounding specialist without much offense. NBA teams always draft bigs who want to play D, but first Birch must persuade the frosh-averse Dixon to give him minutes.

SHOT BREAKDOWN

1,528 field goal attempts



JOE LUNARDI'S GAMES WITH BRACKET IMPACT

Jan. 16 @ **Syracuse** Jan. 21 vs. **Louisville** March 3 @ **UConn**



12

BAYLOR

Last season: 18-13 (7-9 Big 12)

Last year, turnover at point guard (Tweety Carter to A.J. Walton) led to turnovers everywhere else (15.7 per game, most in the Big 12). Not coincidentally, Baylor lost six of its final eight games. This year, Walton, now a junior, will get help at the 1 from juco All-America Pierre Jackson. That's good news for soph **Perry Jones** (13.9 ppg) and senior PF Quincy Acy (12.4 ppg) and bad news for ballhawks across the country.

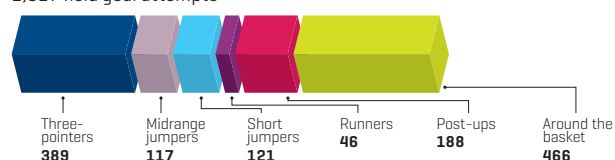
CHAD FORD'S FUTURE PRO

SF/PF PERRY JONES
SOPHOMORE, 6'11", 235
TOP 100 DRAFT BOARD
RANK: 6

Jones has Tracy McGrady-like talent, but to stick in the NBA he needs to round out his game much as Lamar Odom once did. If the wingman can improve his team play, he'll be a top-five pick.

SHOT BREAKDOWN

1,327 field goal attempts



JOE LUNARDI'S GAMES WITH BRACKET IMPACT

Dec. 17 @ **BYU** Jan. 2 vs. **Texas A&M** Jan. 16 @ **Kansas**

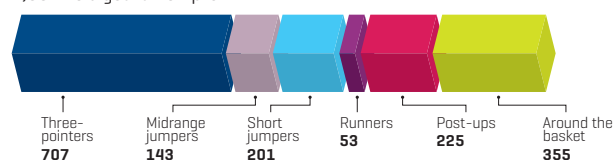
CHAD FORD'S FUTURE PRO

PG JORDAN TAYLOR
SENIOR, 6'1", 195
TOP 100 DRAFT BOARD
RANK: 70

A shoot-first point who lacks elite size, Taylor doesn't look anything like an NBA prospect. But scouts can't argue with his production, and they're giving him a good look based on his toughness and stroke.

SHOT BREAKDOWN

1,684 field goal attempts



JOE LUNARDI'S GAMES WITH BRACKET IMPACT

Nov. 30 @ **North Carolina** Jan. 12 @ **Purdue** Feb. 4 vs. **Ohio State**

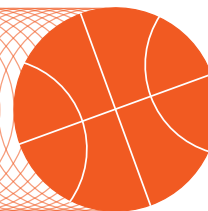


13

WISCONSIN

Last season: 25-9 (13-5 Big Ten) Sweet 16

How does a team replacing three starters, including top scorer Jon Leuer (18.3 ppg), open the season ranked higher than last year? Well, the Badgers return senior PG **Jordan Taylor**, who led the nation in assist/turnover ratio (3.83) while scoring 18.1 ppg, so there shouldn't be much drop-off for D1's second-most efficient offense. Besides, when has a Bo Ryan-coached Badgers team not been in the Tourney? Try never.



14

KANSAS

Last season: 35-3 (14-2 Big 12) Elite Eight

After losing four of their top five players from last season, the Jayhawks were rocked by the news that freshmen SG Ben McLemore and PF Jamari Traylor are academically ineligible. Of course, there's a good reason Big 12 coaches still picked this team to finish first: Senior PG Tyshawn Taylor (4.6 apg) and PF **Thomas Robinson** (7.6 ppg, 6.4 rpg, 14.6 mpg) appear ready for star turns for coach Bill Self, who's made 13 straight Tourneys.

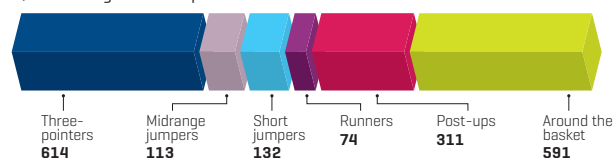
CHAD FORD'S FUTURE PRO

PF THOMAS ROBINSON
JUNIOR, 6'9", 237
TOP 100 DRAFT BOARD
RANK: 9

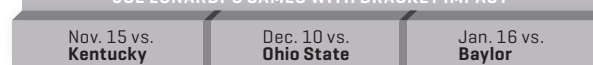
Despite spending last season in the shadows of the Morris twins, Robinson, in his limited minutes, was the nation's best rebounder. He's also the type of physical specimen NBA teams hunger for in the lottery.

SHOT BREAKDOWN

1,835 field goal attempts



JOE LUNARDI'S GAMES WITH BRACKET IMPACT



15

XAVIER

Last season: 24-8 (15-1 A-10) 2nd Round

Just when the X-Men looked deep and balanced, seven-foot senior Kenny Frease (11.7 ppg, 7.1 rpg) was suspended indefinitely for "not fulfilling all the responsibilities of a Xavier player." The team is still strong in the backcourt with A-10 POY **Tu Holloway** (19.7 ppg, 5.4 apg) and junior PG Mark Lyons (13.6 ppg). Meanwhile, transfer PF Travis Taylor will be asked to hit the boards hard, but for a Tourney hopeful, that hole in the middle looms large.

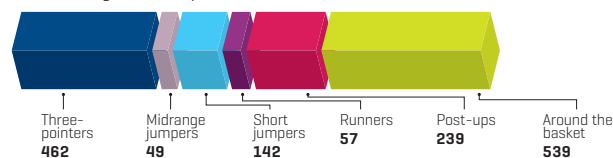
CHAD FORD'S FUTURE PRO

PG TU HOLLOWAY
SENIOR, 6'0", 185
TOP 100 DRAFT BOARD
RANK: 45

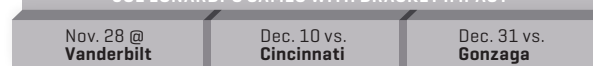
He has speed and toughness and can flat-out score. Scouts are overlooking his struggles as a shooter because of a great junior season. And if Jordan Crawford can be a first-round pick... et tu, Holloway?

SHOT BREAKDOWN

1,488 field goal attempts



JOE LUNARDI'S GAMES WITH BRACKET IMPACT



16

ARIZONA

Last season: 30-8 (14-4 Pac-10) Elite Eight

The Sean Miller era begins in earnest this season when his top-10 recruiting class takes the floor, led by PG Josiah Turner (No. 15, ESPNU 100) and SG Nick Johnson (No. 22). The freshmen will have a worthy tutor in senior SG **Kyle Fogg** (85 starts), while junior small forwards Solomon Hill and Kevin Parrom are buying into Miller after two seasons. Once the coach gets his guys perfecting his up-tempo system, Miller's time could prove to be epic.

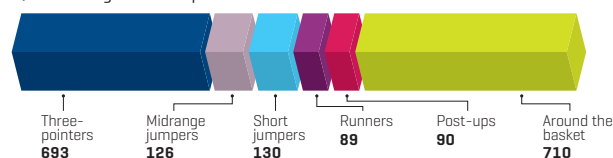
CHAD FORD'S FUTURE PRO

PG JOSIAH TURNER
FRESHMAN, 6'3", 192
TOP 100 DRAFT BOARD
RANK: 27

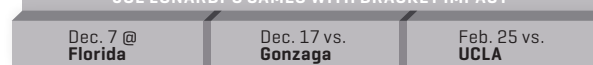
Turner is an elite athlete who can get to the rim at will. He would be ranked 10 to 15 spots higher, but his low basketball IQ and penchant for rubbing teammates the wrong way cost him points with scouts.

SHOT BREAKDOWN

1,838 field goal attempts



JOE LUNARDI'S GAMES WITH BRACKET IMPACT



17

MARQUETTE

Last season: 22-15 (9-9 Big East) Sweet 16

Seniors **Darius Johnson-Odom** (15.8 ppg) and **Jae Crowder** (11.8 ppg, 6.8 rpg) have legit résumés, but the Golden Eagles' fortunes rest on an unproven lot. Can PF Jamil Wilson, an Oregon transfer, be a fixture? Can Junior Cadougan fill the point guard vacancy? And will soph SG Vander Blue (5.1 ppg) live up to his high-scoring rep? If they come through, this team will compete with anyone. If not? Even the NIT will be a stretch.

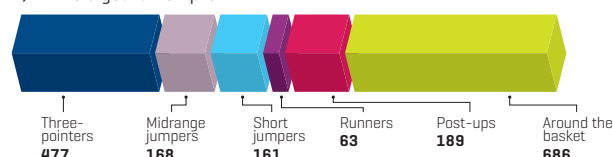
CHAD FORD'S FUTURE PRO

SG VANDER BLUE
SOPHOMORE, 6'4", 200
TOP 100 DRAFT BOARD
RANK: 59

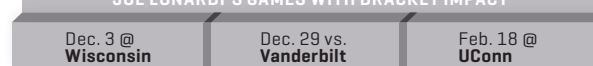
Johnson-Odom will get more press, but scouts are secretly high on Blue despite a so-so first season. His tough D and athleticism have them wishing he finds a better J. If it comes, he'll be a riser.

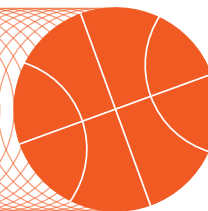
SHOT BREAKDOWN

1,744 field goal attempts



JOE LUNARDI'S GAMES WITH BRACKET IMPACT





18

ALABAMA

Last season: 25-12 (12-4 SEC)

The Tide look like contenders in November—and we don't mean Nick Saban's team. Bama hasn't danced since 2006, but it should get off the schneid with a squad that was seventh in D1 in defensive efficiency and returns solid bigs in **JaMychal Green** (15.5 ppg, 7.5 rpg) and Tony Mitchell (15.2 ppg, 7.1 rpg). If frosh wings Levi Randolph (No. 30, ESPNU 100) and Trevor Lacey (No. 40) can drain threes, Tide fans won't be so sad to see football end.

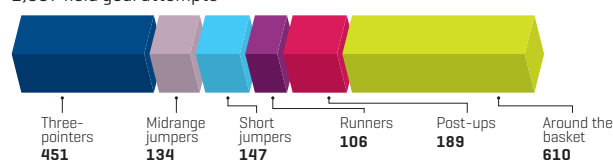
CHAD FORD'S FUTURE PRO

PF JAMYCHAL GREEN
SENIOR, 6'8", 228
TOP 100 DRAFT BOARD RANK: 73

Green was one of the more efficient posts last season, but scouts wonder if he can do one thing well enough for the NBA. They're not convinced, and he'll need a huge year to change their minds.

SHOT BREAKDOWN

1,637 field goal attempts



JOE LUNARDI'S GAMES WITH BRACKET IMPACT

- Jan. 19 vs. **Vanderbilt**
- Jan. 21 @ **Kentucky**
- Feb. 14 vs. **Florida**



19

CINCINNATI

Last season: 26-9 (11-7 Big East) 3rd Round

Believe it or not, the Bearcats haven't been ranked in the preseason since 2003-04, back when Bob Huggins was coach. This group resembles a lot of those gritty Huggins teams, with a commitment to boards, hard-nosed D and balanced scoring (**Yancy Gates** led with 11.9 ppg last season). But poor shooting (33.8 3PT%, 66.8 FT%) will have to vastly improve for the team to have any chance at duplicating Huggins' 1992 Final Four squad.

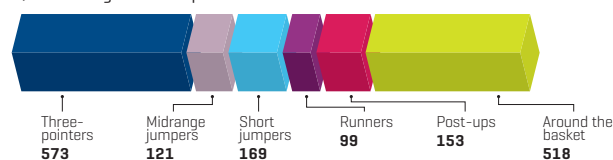
CHAD FORD'S FUTURE PRO

PF YANCY GATES
SENIOR, 6'9", 260
TOP 100 DRAFT BOARD RANK: 94

Gates is built like a tight end, and he'll crash the offensive boards—when motivated. But his play is frustratingly inconsistent, and he's still not the offensive force scouts thought he would be.

SHOT BREAKDOWN

1,633 field goal attempts



JOE LUNARDI'S GAMES WITH BRACKET IMPACT

- Dec. 10 @ **Xavier**
- Jan. 18 @ **UConn**
- Feb. 23 vs. **Louisville**



20

UCLA

Last season: 23-11 (13-5 Pac-10) 3rd Round

What if? That question has become routine for Bruins fans. NBA defections hit hard again as perimeter stars Malcolm Lee and Tyler Honeycutt left early. There is still a deep frontcourt led by soph **Joshua Smith** (10.9 ppg, 6.3 rpg) and junior PF Reeves Nelson (13.9 ppg, 9.1 rpg). But UCLA needs senior guards Lazerick Jones and Jerime Anderson to step up—before Smith becomes the next Bruin to leave fans wringing their hands.

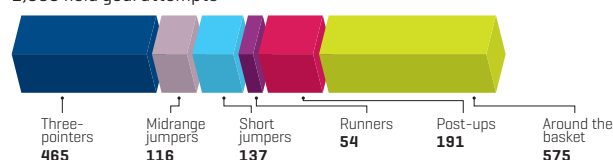
CHAD FORD'S FUTURE PRO

C JOSHUA SMITH
SOPHOMORE, 6'10", 305
TOP 100 DRAFT BOARD RANK: 25

Smith flirted with declaring as a freshman but heard from scouts that they want him to lose more weight and dominate the Pac-12 for a season. If he does, he could find himself in the lottery.

SHOT BREAKDOWN

1,538 field goal attempts



JOE LUNARDI'S GAMES WITH BRACKET IMPACT

- Dec. 3 vs. **Texas**
- Jan. 5 vs. **Arizona**
- Feb. 11 vs. **California**



21

TEXAS A&M

Last season: 24-9 (10-6 Big 12) 2nd Round

Billy Kennedy's medical leave (for undisclosed reasons) put an early damper on high spirits in College Station. Once the new coach is back, he'll inherit a team led by junior SF **Khris Middleton**, who can score from anywhere (14.4 ppg), and two steady seniors in PF David Loubeau (11.8 ppg) and PG Dash Harris. But the Aggies are weak behind the arc (33.9 3PT%), and talented prep guards Jamal Branch and Jordan Green need Kennedy's guidance.

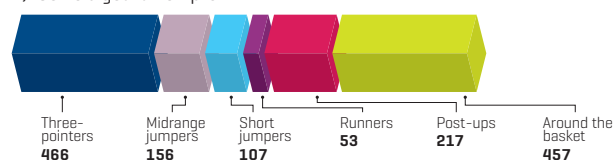
CHAD FORD'S FUTURE PRO

SF KRIS MIDDLETON
JUNIOR, 6'7", 210
TOP 100 DRAFT BOARD RANK: 26

Middleton has perfected the midrange game and drawn comparisons to a young Rip Hamilton. But scouts are bitterly divided: Lottery pick or NBA project? The truth probably lies somewhere in the middle.

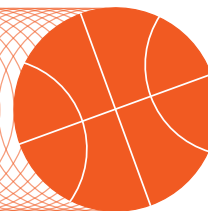
SHOT BREAKDOWN

1,456 field goal attempts



JOE LUNARDI'S GAMES WITH BRACKET IMPACT

- Dec. 17 vs. **Florida**
- Feb. 1 vs. **Baylor**
- Feb. 22 vs. **Kansas**



22

MICHIGAN

Last season: 21-14 (9-9 Big Ten) 3rd Round

All but one key player is back from a team that came within a bucket of the Sweet 16, so the Wolverines certainly are Top 25-worthy if John Beilein can replace key all-purpose PG Darius Morris [15.0 ppg, 6.7 apg, 4.0 rpg]. It will take a group effort: Senior Stu Douglass and four-star preps Carlton Brundidge and Trey Burke are candidates at the point, while **Tim Hardaway Jr.** [13.9 ppg] will always welcome extra shots.

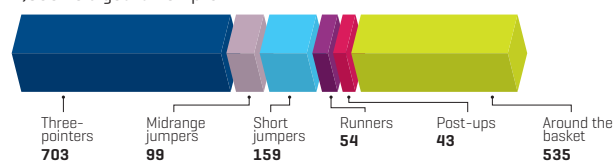
CHAD FORD'S FUTURE PRO

SG TIM HARDAWAY JR.
SOPHOMORE, 6'5", 185
TOP 100 DRAFT BOARD RANK: 90

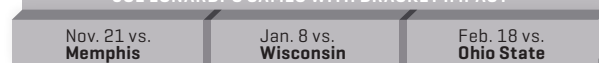
Hardaway doesn't see the floor the way his dad did, but he sure isn't afraid to let the ball fly, for better or worse. If he shows more discipline, then some team will at least give him a shot to follow in Dad's footsteps.

SHOT BREAKDOWN

1,593 field goal attempts



JOE LUNARDI'S GAMES WITH BRACKET IMPACT



23

GONZAGA

Last season: 25-10 (11-3 WCC) 3rd Round

Given the Zags' tradition of high-quality point guards, it's no surprise that two down years have coincided with instability at the position. But the Zags are primed at the 1 again with four-star prep Kevin Pangos, who will dish to junior F **Elias Harris** [12.4 ppg] and seven-foot senior Robert Sacre [12.5 ppg]. Mark Few's youth movement also includes SG Gary Bell Jr. [No. 68, ESPNU 100], Gonzaga's highest-rated recruit since Austin Daye in 2007.

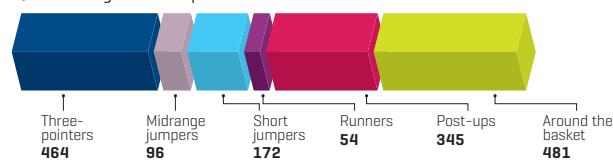
CHAD FORD'S FUTURE PRO

SF/PF ELIAS HARRIS JUNIOR, 6'7", 240
TOP 100 DRAFT BOARD RANK: 66

As a freshman, Harris was pegged by scouts as a potential lottery pick. But a so-so second season did damage to his stock. Harris has to be more aggressive on both ends to have a shot at the first round.

SHOT BREAKDOWN

1,612 field goal attempts



JOE LUNARDI'S GAMES WITH BRACKET IMPACT



24

CALIFORNIA

Last season: 18-15 (10-8 Pac-10)

After settling for the NIT, Cal is primed for an NCAA run. No other Pac-12 team has three returning scorers the caliber of senior PG **Jorge Gutierrez** [14.6 ppg], senior PF Harper Kamp [14.2] and soph SG Allen Crabbe [13.4]. And no playmaker is more underrated than Gutierrez, an adept defender and passer [4.5 apg]. If his teammates cut down on turnovers and shore up the boards, the Bears might sneak into their first Sweet 16 since 1997.

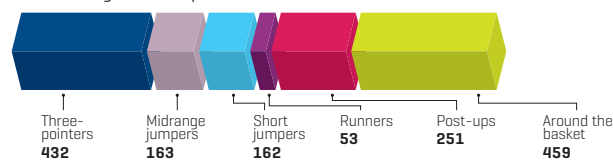
CHAD FORD'S FUTURE PRO

SG ALLEN CRABBE SOPHOMORE, 6'6", 205
TOP 100 DRAFT BOARD RANK: 92

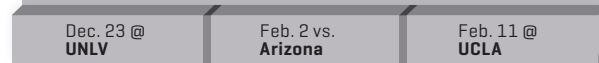
Crabbe lacks elite athleticism, but the sophomore can shoot the basketball from deep. It's a skill that almost always translates to the next level, so he should at least find a spot as a role player in the NBA.

SHOT BREAKDOWN

1,520 field goal attempts



JOE LUNARDI'S GAMES WITH BRACKET IMPACT



25

MICHIGAN STATE

Last season: 19-15 (9-9 Big Ten) 2nd Round

The Spartans started 2010-11 as an NCAA title contender, only to barely make the field. With lower expectations, will State climb higher? Not likely. Tom Izzo must rely heavily on senior PF **Draymond Green** [12.6 ppg, 8.6 rpg, 4.1 apg] after senior Delvon Roe retired due to knee issues. Top 25 frosh Branden Dawson, a forward, and soph G Keith Appling have potential, but it will take Izzo's best work yet to make his seventh Final Four.

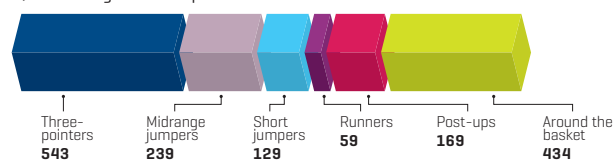
CHAD FORD'S FUTURE PRO

PG/SG KEITH APPLING SOPHOMORE, 6'1", 190
TOP 100 DRAFT BOARD RANK: 85

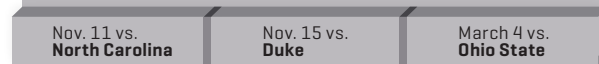
After starring for Team USA this summer, Appling had scouts believing he should take a huge leap from role player to consistent starter. He has the physical tools and offensive skill set. But does he have the basketball IQ?

SHOT BREAKDOWN

1,573 field goal attempts



JOE LUNARDI'S GAMES WITH BRACKET IMPACT





THE NEXT 319

26 - 187

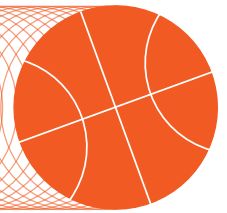
Don't say we didn't mention your team because it's here—somewhere—along with every other D1 squad that didn't crack the top 25. To rank them, *The Mag* enlisted economist and RealGM.com contributor Dan Hanner. He rated teams based on the tempo-free stats of returning/departed players, the development of returning players, the loss and/or return of injured players, the talent level of transfers and/or recruits, and coaching. He used these ratings to project each school's conference finish and its winning percentage against an average D1 opponent. Hey, we didn't say you'd *like* where we mentioned your team.

026 Purdue Big Ten: 5th [90.6%]	053 Georgetown Big East: 10th [80.8%]	080 Indiana State Missouri Valley: 3rd [70.1%]	107 Richmond Atlantic 10: 7th [63.4%]	134 Boston College ACC: 11th [55.4%]	161 TCU Mountain West: 6th [48.9%]
027 UNLV Mountain West: 1st [89.3%]	054 Minnesota Big Ten: 9th [80.6%]	081 Long Beach State Big West: 1st [69.6%]	108 Oakland Summit: 2nd [63.3%]	135 Penn State Big Ten: 12th [55.4%]	162 Auburn SEC: 12th [48.8%]
028 Texas Big 12: 4th [89.1%]	055 NC State ACC: 6th [80.6%]	082 Colorado Pac-12: 7th [69.6%]	109 Providence Big East: 14th [63.3%]	136 North Dakota State Summit: 4th [55.4%]	163 Valparaiso Horizon: 6th [48.8%]
029 Notre Dame Big East: 7th [88.9%]	056 Seton Hall Big East: 11th [80.3%]	083 USC Pac-12: 8th [69.6%]	110 Arizona State Pac-12: 10th [63.3%]	137 Utah Pac-12: 11th [55.3%]	164 Santa Clara West Coast: 5th [48.8%]
030 BYU West Coast: 2nd [88.7%]	057 Virginia Tech ACC: 7th [80.2%]	084 Nevada Western Athletic: 2nd [69.5%]	111 Colorado State Mountain West: 4th [63.1%]	138 Long Island Northeast: 2nd [55.0%]	165 Tennessee State Ohio Valley: 3rd [48.7%]
031 Temple Atlantic 10: 2nd [88.6%]	058 Iowa Big Ten: 10th [80.0%]	085 Davidson Southern: 1st [69.2%]	112 St. Bonaventure Atlantic 10: 8th [62.9%]	139 Drake Missouri Valley: 6th [55.0%]	166 Wisconsin-Green Bay Horizon: 7th [48.6%]
032 Kansas State Big 12: 5th [87.9%]	059 Nebraska Big Ten: 11th [79.7%]	086 Georgia SEC: 7th [69.0%]	113 Missouri State Missouri Valley: 5th [62.8%]	140 Hawaii Western Athletic: 4th [54.8%]	167 Yale Ivy: 3rd [48.3%]
033 New Mexico Mountain West: 2nd [87.5%]	060 Oral Roberts Summit: 1st [78.5%]	087 Oklahoma Big 12: 8th [68.9%]	114 UTEP Conference USA: 6th [62.4%]	141 Ohio Mid-American: 4th [54.6%]	168 Wright State Horizon: 8th [47.7%]
034 Illinois Big Ten: 6th [87.3%]	061 Harvard Ivy: 1st [78.3%]	088 Fairfield Metro Atlantic: 2nd [68.8%]	115 South Dakota State Summit: 3rd [61.9%]	142 Ball State Mid-American: 5th [54.3%]	169 Southern Illinois Missouri Valley: 8th [46.3%]
035 Florida State ACC: 3rd [87.3%]	062 Mississippi State SEC: 5th [77.1%]	089 Georgia Tech ACC: 10th [68.4%]	116 Bucknell Patriot: 1st [61.2%]	143 Western Michigan Mid-American: 6th [54.2%]	170 North Florida Atlantic Sun: 3rd [46.1%]
036 Belmont Atlantic Sun: 1st [87.2%]	063 UAB Conference USA: 2nd [76.8%]	090 Iowa State Big 12: 9th [68.4%]	117 St. John's Big East: 15th [60.1%]	144 James Madison Colonial: 5th [53.9%]	171 Florida Atlantic Sun Belt: 3rd [45.8%]
037 Villanova Big East: 8th [87.0%]	064 Saint Louis Atlantic 10: 3rd [76.4%]	091 Northern Iowa Missouri Valley: 4th [68.4%]	118 East Tennessee State Atlantic Sun: 2nd [60.1%]	145 IUPUI Summit: 5th [53.6%]	172 Quinnipiac Northeast: 4th [45.7%]
038 Clemson ACC: 4th [86.9%]	065 Stanford Pac-12: 5th [75.7%]	092 South Florida Big East: 13th [68.0%]	119 Texas Tech Big 12: 10th [59.6%]	146 Oregon State Pac-12: 12th [53.3%]	173 Wagner Northeast: 5th [45.7%]
039 Missouri Big 12: 6th [86.6%]	066 Virginia ACC: 8th [75.2%]	093 Detroit Horizon: 2nd [67.9%]	120 Vermont America East: 1st [59.4%]	147 Massachusetts Atlantic 10: 10th [52.4%]	174 Boston University America East: 3rd [45.6%]
040 Wichita State Missouri Valley: 1st [86.3%]	067 Maryland ACC: 9th [75.2%]	094 Duquesne Atlantic 10: 6th [67.8%]	121 George Washington Atlantic 10: 9th [59.1%]	148 Denver Sun Belt: 1st [52.3%]	175 Bradley Missouri Valley: 9th [45.1%]
041 Washington Pac-12: 4th [86.0%]	068 Kent State Mid-American: 1st [74.5%]	095 Tennessee SEC: 8th [66.5%]	122 Cleveland State Horizon: 3rd [59.0%]	149 UNC Asheville Big South: 1st [51.9%]	176 Miami [Ohio] Mid-American: 7th [45.0%]
042 Miami [Fla.] ACC: 5th [85.5%]	069 Creighton Missouri Valley: 2nd [74.5%]	096 Robert Morris Northeast: 1st [65.9%]	123 UC Santa Barbara Big West: 2nd [58.7%]	150 Stony Brook America East: 2nd [51.6%]	177 East Carolina Conference USA: 9th [44.8%]
043 West Virginia Big East: 9th [85.3%]	070 Dayton Atlantic 10: 4th [74.2%]	097 Akron Mid-American: 2nd [65.7%]	124 Murray State Ohio Valley: 2nd [57.5%]	151 Coastal Carolina Big South: 2nd [51.1%]	178 Northeastern Colonial: 6th [44.4%]
044 Saint Mary's West Coast: 3rd [84.4%]	071 Iona Metro Atlantic: 1st [73.0%]	098 South Carolina SEC: 9th [65.5%]	125 Rider Metro Atlantic: 3rd [57.3%]	152 DePaul Big East: 16th [50.5%]	179 Fresno State Western Athletic: 5th [44.3%]
045 Indiana Big Ten: 7th [84.4%]	072 Mississippi SEC: 6th [72.7%]	099 Washington State Pac-12: 9th [65.5%]	126 Buffalo Mid-American: 3rd [57.3%]	153 Loyola Chicago Horizon: 5th [50.5%]	180 Georgia State Colonial: 7th [43.6%]
046 San Diego State Mountain West: 3rd [83.9%]	073 Tulsa Conference USA: 3rd [72.6%]	100 New Mexico State Western Athletic: 3rd [65.3%]	127 LSU SEC: 11th [56.6%]	154 Evansville Missouri Valley: 7th [50.4%]	181 Tennessee Tech Ohio Valley: 4th [43.2%]
047 Butler Horizon: 1st [83.7%]	074 VCU Colonial: 3rd [72.5%]	101 San Francisco West Coast: 4th [65.2%]	128 Wisconsin-Milwaukee Horizon: 4th [56.6%]	155 Weber State Big Sky: 2nd [50.2%]	182 Idaho Western Athletic: 6th [43.0%]
048 Utah State Western Athletic: 1st [83.1%]	075 Old Dominion Colonial: 4th [71.9%]	102 Austin Peay Ohio Valley: 1st [65.1%]	129 Montana Big Sky: 1st [56.3%]	156 Central Connecticut State Northeast: 3rd [50.1%]	183 Air Force Mountain West: 7th [42.9%]
049 Northwestern Big Ten: 8th [82.6%]	076 Rutgers Big East: 12th [71.6%]	103 Marshall Conference USA: 5th [64.1%]	130 Cal Poly Big West: 3rd [56.3%]	157 Lehigh Patriot: 2nd [49.5%]	184 William & Mary Colonial: 8th [42.6%]
050 Oklahoma State Big 12: 7th [82.0%]	077 Saint Joseph's Atlantic 10: 5th [70.9%]	104 Princeton Ivy: 2nd [63.9%]	131 Rice Conference USA: 7th [56.0%]	158 Southern Miss Conference USA: 8th [49.4%]	185 Bowling Green Mid-American: 8th [42.6%]
051 Drexel Colonial: 1st [81.9%]	078 Oregon Pac-12: 6th [70.8%]	105 College of Charleston Southern: 2nd [63.8%]	132 Boise State Mountain West: 5th [55.9%]	159 Middle Tennessee Sun Belt: 2nd [49.2%]	186 Pennsylvania Ivy: 4th [42.0%]
052 George Mason Colonial: 2nd [81.3%]	079 Central Florida Conference USA: 4th [70.6%]	106 Arkansas SEC: 10th [63.7%]	133 Loyola [Md.] Metro Atlantic: 4th [55.7%]	160 Rhode Island Atlantic 10: 11th [49.2%]	187 Arkansas State Sun Belt: 4th [42.0%]

THE NEXT 319

188 - 344

COLLEGE
HOOPS
TIP-OFF
11.14.11



188 Illinois State Missouri Valley: 10th [41.5%]	215 VMI Big South: 5th [32.7%]	242 Niagara Metro Atlantic: 8th [28.2%]	269 Jacksonville State Ohio Valley: 9th [22.1%]	296 Northern Illinois Mid-American: 11th [15.7%]	323 Howard Mid-Eastern: 9th [8.8%]
189 Winthrop Big South: 3rd [41.4%]	216 Brown Ivy: 6th [32.5%]	243 Seattle Independent: 1st [28.2%]	270 Southern Utah Summit: 8th [21.9%]	297 High Point Big South: 10th [15.4%]	324 Jackson State Southwestern: 6th [8.6%]
190 Saint Peter's Metro Atlantic: 5th [41.4%]	217 Hampton Mid-Eastern: 1st [32.4%]	244 Mount St. Mary's Northeast: 8th [27.7%]	271 Marist Metro Atlantic: 10th [21.6%]	298 Kennesaw State Atlantic Sun: 9th [15.3%]	325 Hartford America East: 8th [8.3%]
191 Morehead State Ohio Valley: 5th [41.3%]	218 Manhattan Metro Atlantic: 6th [32.2%]	245 Campbell Big South: 6th [26.8%]	272 Fordham Atlantic 10: 14th [21.4%]	299 Texas Southern Southwestern: 2nd [15.2%]	326 North Carolina A&T Mid-Eastern: 10th [8.2%]
192 Western Carolina Southern: 3rd [41.2%]	219 Siena Metro Atlantic: 7th [31.6%]	246 Western Kentucky Sun Belt: 7th [26.3%]	273 UC Irvine Big West: 8th [21.2%]	300 Cal State Bakersfield Independent: 2nd [14.8%]	327 Toledo Mid-American: 12th [8.1%]
193 UT Arlington Southland: 1st [41.0%]	220 Sacred Heart Northeast: 7th [31.5%]	247 Albany America East: 4th [26.1%]	274 Savannah State Mid-Eastern: 4th [20.6%]	301 Norfolk State Mid-Eastern: 6th [14.8%]	328 Bethune-Cookman Mid-Eastern: 11th [7.7%]
194 Cornell Ivy: 5th [40.8%]	221 Wofford Southern: 5th [31.3%]	248 Houston Conference USA: 12th [26.1%]	275 Presbyterian Big South: 8th [20.3%]	302 Florida A&M Mid-Eastern: 7th [14.7%]	329 Towson Colonial: 12th [7.7%]
195 Charlotte Atlantic 10: 12th [40.5%]	222 Morgan State Mid-Eastern: 2nd [31.2%]	249 American Patriot: 5th [26.1%]	276 South Alabama Sun Belt: 10th [20.0%]	303 Florida International Sun Belt: 11th [14.6%]	330 UL Monroe Sun Belt: 12th [7.6%]
196 Loyola Marymount West Coast: 6th [39.5%]	223 Lipscomb Atlantic Sun: 6th [31.2%]	250 Monmouth Northeast: 9th [25.8%]	277 UC Davis Big West: 9th [19.9%]	304 UMKC Summit: 9th [14.5%]	331 South Carolina State Mid-Eastern: 12th [7.5%]
197 Wake Forest ACC: 12th [38.6%]	224 San Jose State Western Athletic: 7th [30.7%]	251 UNC Greensboro Southern: 7th [25.6%]	278 Southeastern Louisiana Southland: 6th [19.9%]	305 Idaho State Big Sky: 8th [14.3%]	332 UMBC America East: 9th [7.5%]
198 Portland West Coast: 7th [38.6%]	225 UL Lafayette Sun Belt: 5th [30.3%]	252 San Diego West Coast: 9th [25.2%]	279 Georgia Southern Southern: 10th [19.8%]	306 Samford Southern: 11th [14.2%]	333 Fairleigh Dickinson Northeast: 12th [7.5%]
199 Delaware Colonial: 9th [37.7%]	226 Sam Houston State Southland: 3rd [30.1%]	253 Cal State Northridge Big West: 6th [25.0%]	280 Maine America East: 5th [19.3%]	307 Colgate Patriot: 7th [14.1%]	334 Grambling Southwestern: 7th [7.4%]
200 Northern Colorado Big Sky: 3rd [37.3%]	227 Cal State Fullerton Big West: 5th [29.9%]	254 Saint Francis [Pa.] Northeast: 10th [25.0%]	281 McNeese State Southland: 7th [19.3%]	308 Mississippi Valley State Southwestern: 3rd [13.9%]	335 Western Illinois Summit: 10th [6.7%]
201 Liberty Big South: 4th [37.1%]	228 Pepperdine West Coast: 8th [29.9%]	255 SE Missouri State Ohio Valley: 6th [25.0%]	282 Tennessee Martin Ohio Valley: 10th [18.9%]	309 Radford Big South: 11th [12.1%]	336 Texas-Pan American Great West: 4th [6.0%]
202 Jacksonville Atlantic Sun: 4th [36.8%]	229 Stephen F. Austin Southland: 4th [29.5%]	256 UC Riverside Big West: 7th [24.5%]	283 Charleston Southern Big South: 9th [18.4%]	310 Texas A&M-Corpus Christi Southland: 11th [11.9%]	337 Prairie View A&M Southwestern: 8th [4.3%]
203 Hofstra Colonial: 10th [36.8%]	230 Columbia Ivy: 7th [29.4%]	257 Elon Southern: 8th [24.3%]	284 Navy Patriot: 6th [18.4%]	311 Stetson Atlantic Sun: 10th [11.6%]	338 Central Arkansas Southland: 12th [4.1%]
204 Holy Cross Patriot: 3rd [36.2%]	231 IPFW Summit: 6th [29.4%]	258 North Dakota Great West: 2nd [24.3%]	285 Illinois-Chicago Horizon: 10th [18.3%]	312 Alabama A&M Southwestern: 4th [11.0%]	339 Maryland Eastern Shore Mid-Eastern: 13th [4.1%]
205 La Salle Atlantic 10: 13th [36.1%]	232 Utah Valley Great West: 1st [29.4%]	259 Gardner-Webb Big South: 7th [23.5%]	286 Alabama State Southwestern: 1st [18.2%]	313 Army Patriot: 8th [10.9%]	340 Arkansas-Pine Bluff Southwestern: 9th [3.9%]
206 Northern Arizona Big Sky: 4th [35.6%]	233 Eastern Washington Big Sky: 5th [29.3%]	260 Louisiana Tech Western Athletic: 8th [23.2%]	287 South Carolina Upstate Atlantic Sun: 7th [18.2%]	314 Alcorn State Southwestern: 5th [10.2%]	341 SIU Edwardsville Ohio Valley: 11th [3.8%]
207 Pacific Big West: 4th [34.9%]	234 UALR Sun Belt: 6th [29.0%]	261 Eastern Illinois Ohio Valley: 7th [23.1%]	288 Montana State Big Sky: 6th [17.9%]	315 Bryant Northeast: 11th [9.6%]	342 Houston Baptist Great West: 5th [3.8%]
208 Lamar Southland: 2nd [34.7%]	235 Youngstown State Horizon: 9th [28.9%]	262 Eastern Kentucky Ohio Valley: 8th [23.1%]	289 Portland State Big Sky: 7th [17.8%]	316 Dartmouth Ivy: 8th [9.6%]	343 Southern Southwestern: 10th [1.7%]
209 Mercer Atlantic Sun: 5th [34.7%]	236 Central Michigan Mid-American: 9th [28.6%]	263 South Dakota Summit: 7th [22.9%]	290 Northwestern State Southland: 8th [17.6%]	317 Sacramento State Big Sky: 9th [9.5%]	344 Chicago State Great West: 6th [0.9%]
210 Tulane Conference USA: 10th [34.5%]	237 UTSA Southland: 5th [28.6%]	264 Eastern Michigan Mid-American: 10th [22.7%]	291 Delaware State Mid-Eastern: 5th [17.5%]	318 Binghamton America East: 7th [9.4%]	
211 UNC Wilmington Colonial: 11th [34.3%]	238 Chattanooga Southern: 6th [28.5%]	265 Troy Sun Belt: 8th [22.6%]	292 Florida Gulf Coast Atlantic Sun: 8th [17.4%]	319 The Citadel Southern: 12th [9.4%]	
212 St. Francis [N.Y.] Northeast: 6th [33.6%]	239 Lafayette Patriot: 4th [28.5%]	266 Canisius Metro Atlantic: 9th [22.5%]	293 Texas State Southland: 9th [17.1%]	320 NJIT Great West: 3rd [9.2%]	
213 SMU Conference USA: 11th [33.5%]	240 Coppin State Mid-Eastern: 3rd [28.4%]	267 Furman Southern: 9th [22.2%]	294 New Hampshire America East: 6th [16.9%]	321 Longwood Independent: 3rd [9.2%]	
214 Appalachian State Southern: 4th [33.2%]	241 Wyoming Mountain West: 8th [28.3%]	268 North Texas Sun Belt: 9th [22.1%]	295 Nicholls State Southland: 10th [15.7%]	322 North Carolina Central Mid-Eastern: 8th [9.0%]	

For more college hoops intel, go to ESPN Insider, where experts examine next-level numbers, NCAA bracket trends and more.